

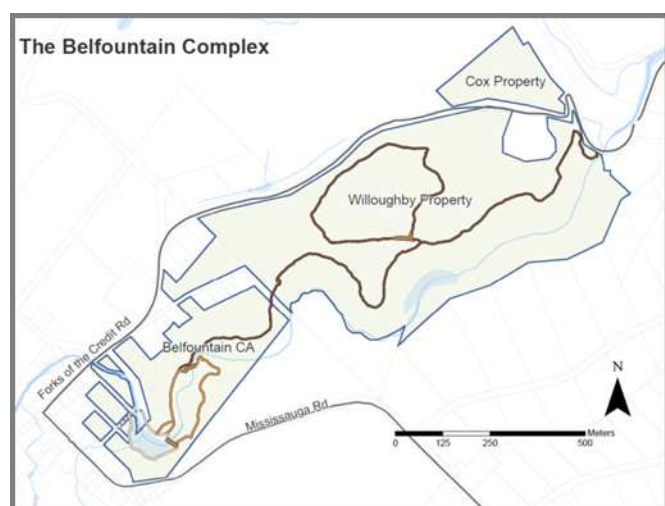
Belfountain Complex

Management Plan & Class Environmental Assessment

Belfountain Complex

Located on the Niagara Escarpment within the Town of Caledon, the 56 ha (138 acre) Belfountain Complex is composed of three unique properties:

- Belfountain Conservation Area (13 ha)
- Cox Property (4 ha)
- Willoughby Property (owned by the Ontario Heritage Trust, managed by CVC) (39 ha)



The Belfountain Complex

The Complex contains many unique and significant natural and cultural features such as sensitive habitats and at-risk species, as well as remnants of industrial mills and century-old park features.

Management Plan

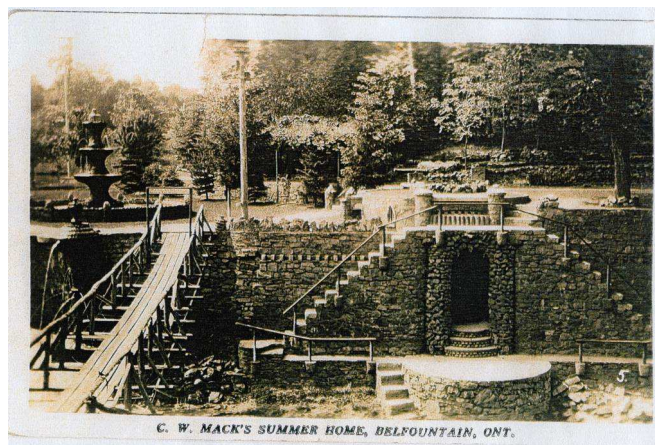
CVC is in the process of developing a management plan for the Belfountain Complex. The management plan will outline the vision for the Complex and provide the framework that will guide its future management.



CVC is currently in the Strategic Directions phase of the management planning process and has retained *Brook McIlroy Inc.*, a landscape architect firm, to develop concept plans and options for the area. Proposed projects and recommendations range in scope and scale. Examples include:

- enhance aesthetics through landscaping and garden design
- restore degraded natural areas
- enhance visitor appreciation and experience through interpretive opportunities and a multi-functional visitor centre
- create better visitor experiences by updating the trail system and other recreational facilities
- improve visitor flow and traffic by redesigning the parking area
- develop policies to better manage visitors and special events

The final management plan will require approval from CVC's Board of Directors, the Niagara Escarpment Commission and the Ministry of Natural Resources and Forestry. Implementation of the approved projects and programs will occur over several years.

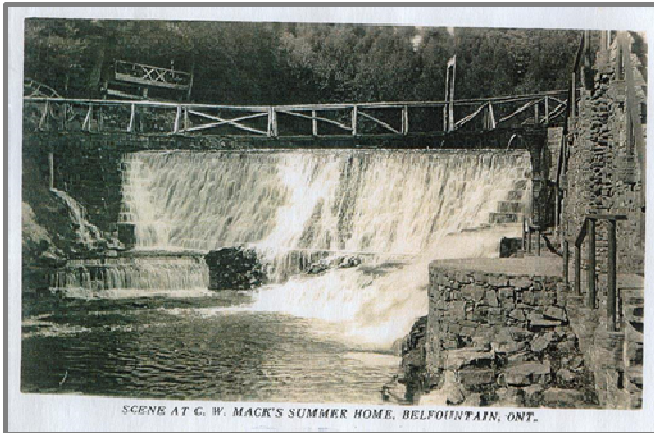


Originally known as Mack's Park, Belfountain Conservation Area has been open to the public since 1914

Class Environmental Assessment

As a component of the management planning process for the Belfountain Complex, CVC commenced a class environmental assessment (Class EA) for the Belfountain dam and headpond. An environmental assessment is a study and planning process that evaluates the positive and negative impacts of a project before decisions are made about implementation.

The need for the Belfountain dam and headpond Class EA was identified in previous assessments of the dam which revealed various structural and environmental issues and concluded that the dam does not meet all of the current provincial standards for dam safety. CVC has retained *Amec Foster Wheeler* to undertake this project, which will be carried out concurrently with the ongoing Belfountain Complex Management Plan.



Belfountain Dam and Original Bridge

The goal of the Class EA for the Belfountain dam and headpond is to determine a solution that will address the problem of a potentially unsafe structure while aligning with CVC's objectives for the area:

- minimize risk to visitors, staff and downstream properties
- conserve and enhance cultural heritage values
- conserve and enhance natural heritage values
- maintain a barrier between sensitive, upstream Brook Trout populations and downstream species
- promote natural stream function
- maintain or improve visitor experience
- ensure long-term sustainability and economic viability

CVC is in the early stages of the Class EA process and potential solutions and alternatives have not yet been determined.



Public Consultation

CVC is hosting an open house to present the Class EA information for the Belfountain dam and headpond as well as concept plans for Belfountain Conservation Area.

Date: **Tuesday, September 22nd, 2015**

Time: **6pm – 9pm**

Presentation: 6:30pm – 7:30pm

Location: **Caledon Ski Club**

17431 Mississauga Rd

Caledon, ON L7K 0E9

CVC staff will also be in Belfountain Conservation Area from 11 a.m. to 4 p.m. to provide information and discuss the Belfountain projects on the following dates:

- **Saturday, September 26th**
- **Sunday, September 27th**
- **Friday, October 2nd**
- **Saturday, October 3rd**

We look forward to receiving your feedback!

Where Can I Learn More?

More information on the Belfountain Complex can be found on CVC's website: www.creditvalleyca.ca/bcmp. Please contact Laura Rundle if you require more information or have any questions in regards to this project.

Contact: Laura Rundle

Address: 1255 Old Derry Rd, Mississauga ON L5N 6R4

Phone: (905) 670 – 1615 ext. 535

Email: lrundle@creditvalleyca.ca