

Appendix O

Collision Diagrams

Collision Diagram

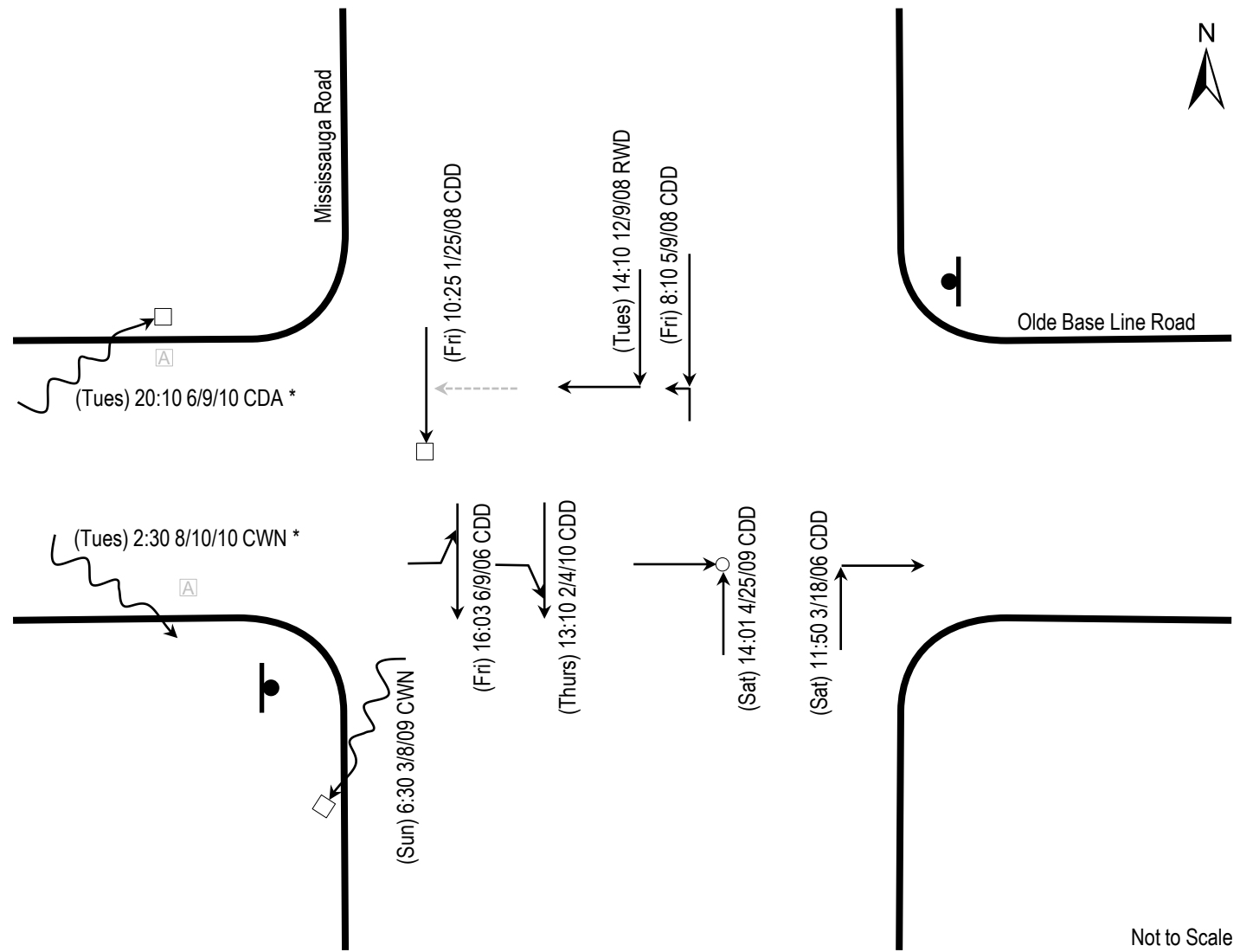
Location ID: INT 2345

Jurisdiction: Region of Peel

Location Description:
Mississauga Road @ Olde Base Line Road

Period From: January 1, 2006

Period To: December 31, 2010



Key to Symbols			* Avoidance of Animal
Vehicle Type	Collision Type	Environment Condition	
→ Automobile	→ → Rear-end	C Clear	(Mon) 18:00 07/13/07 CDD (weekday); time; month/day/year environment; road surface; lighting
(T) → Truck	→ ↘ Turning Movement	R Rain	
(B) → Bus	→ □ Fixed Object	S Snow	
(C) → Bicycle	→ ▲ Animal	F Fog	
(P) → Pedestrian	→ ⚡ Out of Control	Road Surface Condition	Client: Region of Peel
Vehicle Movement	→ ↗ Angle	D Dry	
↖ Left	→ ↘ Sideswipe (same direction)	W Wet	
→ Straight	↖↘ Sideswipe (opposite direction)	S Snow	Project Name: Belfountain EA – Safety Review
↘ Right		I Ice	
↔ Reversing		Light Condition	Project #: 6776
Traffic Control	Crash Severity	D Daylight	Exhibit #: A-1
⊙ Stop Sign	→ → Property Damage Only	A Dawn/Dusk	
⊞ Traffic Signal	→ ○ Non-Fatal Injury	N Dark	
	→ ● Fatality	L Streetlight	Prepared By: CK
			Date: October 2012



Collision Diagram

Location ID: 36

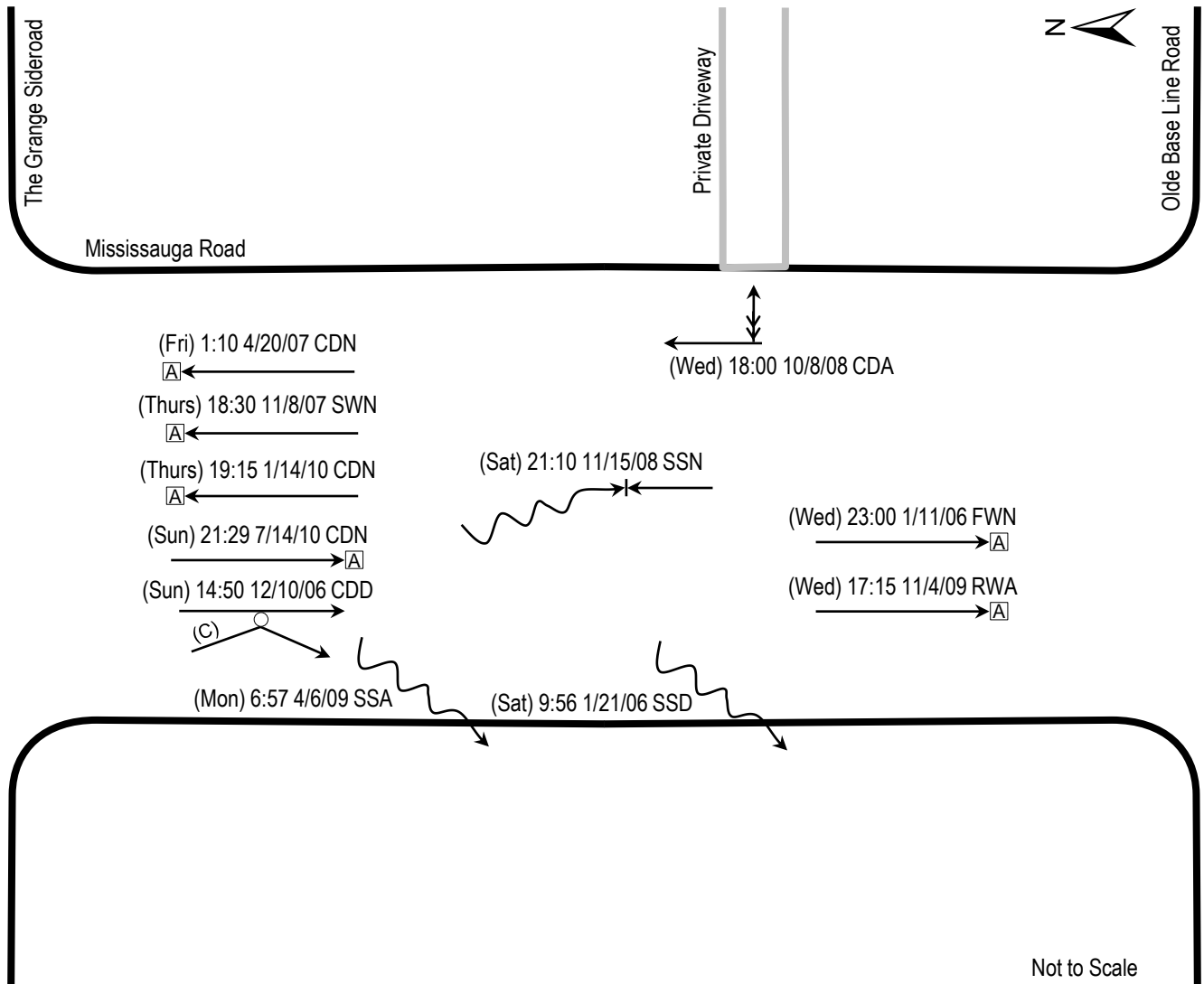
Jurisdiction: Region of Peel

Location Description:

Mississauga Road between
Olde Base Line Road and The Grange Sideroad

Period From: January 1, 2006

Period To: December 31, 2010



Not to Scale

Key to Symbols			Notes: Collision locations are approximate. Number and configuration of private driveways is not representative of existing conditions.
Vehicle Type	Collision Type	Environment Condition	
→ Automobile	→ → Rear-end	C Clear	(Mon) 18:00 07/13/07 CDD (weekday); time; month/day/year environment; road surface; lighting
(T) → Truck	→ ↘ Turning Movement	R Rain	
(B) → Bus	→ □ Fixed Object	S Snow	Client: Region of Peel
(C) → Bicycle	→ △ Animal	F Fog	
(P) → Pedestrian	→ ⊞ Out of Control	Road Surface Condition	Project Name: Belfountain EA – Safety Review
Vehicle Movement	→ ↑ Angle	D Dry	
↶ Left	→ ↘ Sideswipe (same direction)	W Wet	Project #: 6776
→ Straight	↘ ↘ Sideswipe (opposite direction)	S Snow	
↷ Right		I Ice	Exhibit #: A-2
↔ Reversing		Light Condition	
Traffic Control	Crash Severity	D Daylight	Prepared By: CK Date: October 2012
⊙ Stop Sign	→ → Property Damage Only	A Dawn/Dusk	
⊞ Traffic Signal	→ ○ Non-Fatal Injury	N Dark	
	→ ● Fatality	L Streetlight	

Collision Diagram

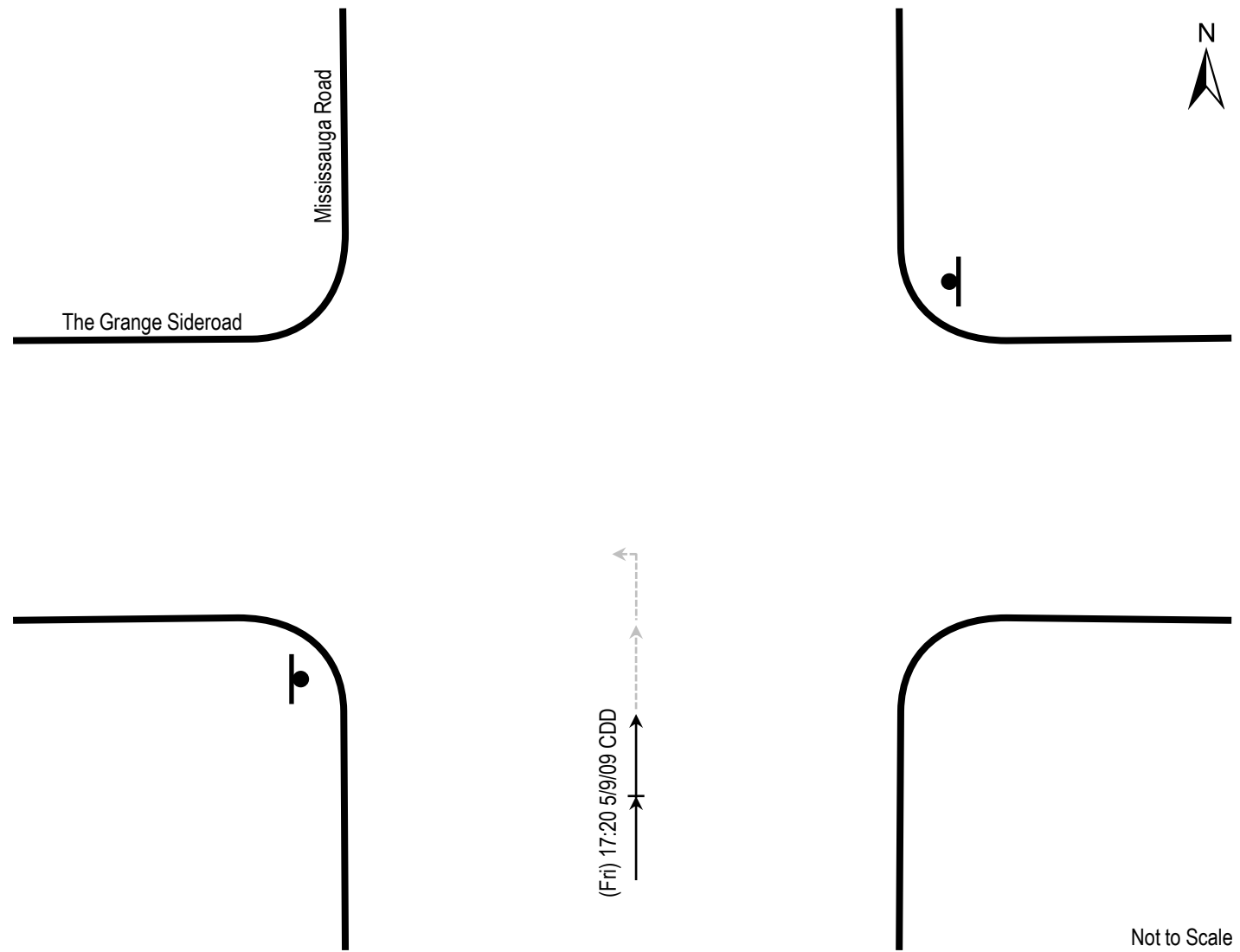
Location ID: INT 1663

Jurisdiction: Region of Peel

Location Description:
Mississauga Road @ The Grange Side Road

Period From: January 1, 2006

Period To: December 31, 2010



Key to Symbols			
Vehicle Type	Collision Type	Environment Condition	
→ Automobile	→ → Rear-end	C Clear	
(T) → Truck	→ ↘ Turning Movement	R Rain	
(B) → Bus	→ □ Fixed Object	S Snow	(Mon) 18:00 07/13/07 CDD (weekday); time; month/day/year environment; road surface; lighting
(C) → Bicycle	→ ▢ Animal	F Fog	
(P) → Pedestrian	→ ~ Out of Control	Road Surface Condition	Client: Region of Peel
Vehicle Movement	→ ↗ Angle	D Dry	
↙ Left	↔ Sideswipe (same direction)	W Wet	Project Name: Belfountain EA – Safety Review
→ Straight	↔ Sideswipe (opposite direction)	S Snow	
↘ Right		I Ice	Project #: 6776
↔ Reversing		Light Condition	
Traffic Control	Crash Severity	D Daylight	Exhibit #: A-3
⊥ Stop Sign	→ → Property Damage Only	A Dawn/Dusk	
⊞ Traffic Signal	→○→ Non-Fatal Injury	N Dark	Prepared By: CK Date: October 2012
	→●→ Fatality	L Streetlight	



Collision Diagram

Location ID: 574

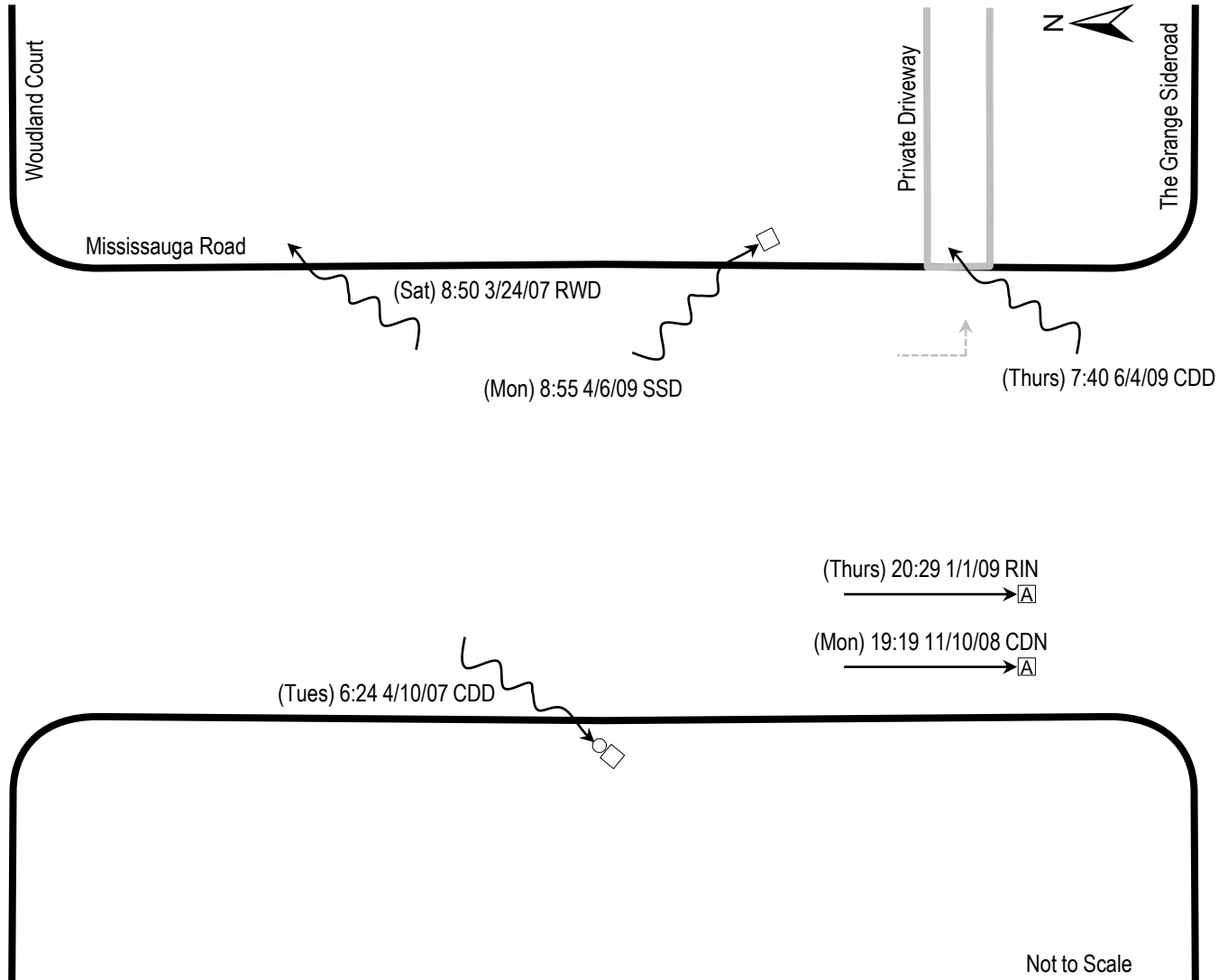
Jurisdiction: Region of Peel

Location Description:

Mississauga Road between
The Grange Sideroad and Woodland Court

Period From: January 1, 2006

Period To: December 31, 2010



Key to Symbols		Notes:	
Vehicle Type	Collision Type	Environment Condition	Collision locations are approximate. Number and configuration of private driveways is not representative of existing conditions.
→ Automobile (T) → Truck (B) → Bus (C) → Bicycle (P) → Pedestrian	→ → Rear-end → ↘ Turning Movement → □ Fixed Object → ⊠ Animal → ⚡ Out of Control → ↗ Angle → ↘ Sideswipe (same direction) → ↙ Sideswipe (opposite direction)	C Clear R Rain S Snow F Fog	
Vehicle Movement		Road Surface Condition	(Mon) 18:00 07/13/07 CDD (weekday); time; month/day/year environment; road surface; lighting
↶ Left → Straight ↷ Right ↔ Reversing		D Dry W Wet S Snow I Ice	Client: Region of Peel
Traffic Control	Crash Severity	Light Condition	Project Name: Belfountain EA – Safety Review
⬮ Stop Sign ⓪ Traffic Signal	→ → Property Damage Only → ○ → Non-Fatal Injury → ● → Fatality	D Daylight A Dawn/Dusk N Dark L Streetlight	Project #: 6776
			Exhibit #: A-4
			Prepared By: CK Date: October 2012



Collision Diagram

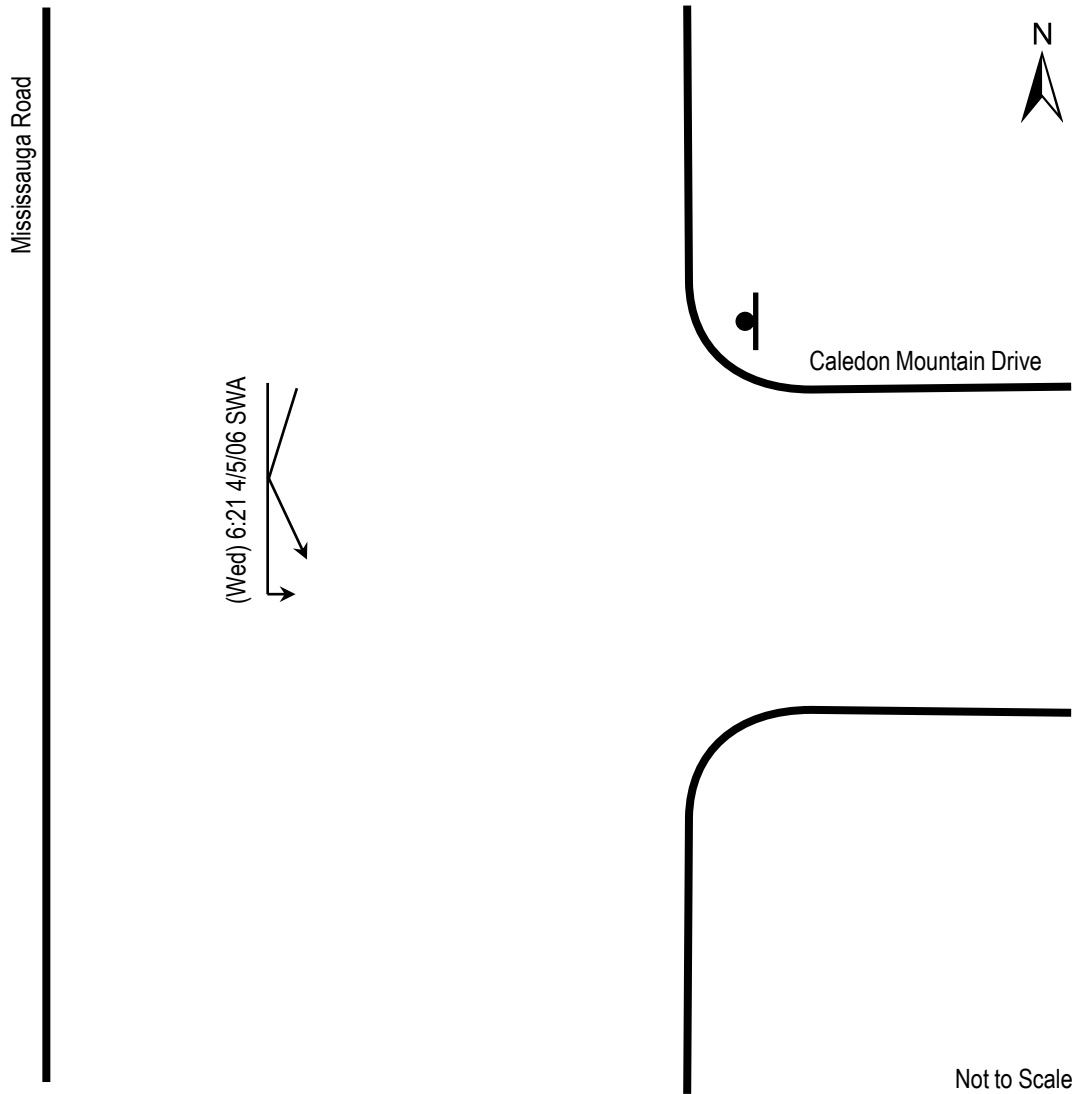
Location ID: INT_1380

Jurisdiction: Region of Peel

Location Description:
Caledon Mountain Dr @ Mississauga Road

Period From: January 1, 2006

Period To: December 31, 2010



Key to Symbols			Notes: Collision locations are approximate.
Vehicle Type	Collision Type	Environment Condition	
→ Automobile	→+→ Rear-end	C Clear	(Mon) 18:00 07/13/07 CDD (weekday); time; month/day/year environment; road surface; lighting
(T) → Truck	→↙ Turning Movement	R Rain	
(B) → Bus	→□ Fixed Object	S Snow	Client: Region of Peel
(C) → Bicycle	→▲ Animal	F Fog	
(P) → Pedestrian	→⚡ Out of Control	Road Surface Condition	Project Name: Belfountain EA – Safety Review
Vehicle Movement	→↗ Angle	D Dry	
↙ Left	↔ Sideswipe (same direction)	W Wet	Project #: 6776
→ Straight	↔ Sideswipe (opposite direction)	S Snow	
↘ Right		I Ice	Exhibit #: A-5
↔ Reversing		Light Condition	
Traffic Control	Crash Severity	D Daylight	Prepared By: CK Date: October 2012
⊥ Stop Sign	→+→ Property Damage Only	A Dawn/Dusk	
⊞ Traffic Signal	→○→ Non-Fatal Injury	N Dark	
	→●→ Fatality	L Streetlight	

Collision Diagram

Location ID: 427

Jurisdiction: Region of Peel

Location Description:

Old Main Street between
Caledon Mountain Drive and Bush Street

Period From: January 1, 2006

Period To: December 31, 2010



Key to Symbols

Vehicle Type	Collision Type	Environment Condition
→ Automobile	→ → Rear-end	C Clear
(T) → Truck	→ ↘ Turning Movement	R Rain
(B) → Bus	→ □ Fixed Object	S Snow
(C) → Bicycle	→ △ Animal	F Fog
(P) → Pedestrian	→ ⚡ Out of Control	Road Surface Condition
Vehicle Movement	→ ↘ Angle	D Dry
↙ Left	→ ↘ Sideswipe (same direction)	W Wet
→ Straight	→ ↘ Sideswipe (opposite direction)	S Snow
↘ Right		I Ice
↔ Reversing		Light Condition
Traffic Control	Crash Severity	D Daylight
⊕ Stop Sign	→ → Property Damage Only	A Dawn/Dusk
⊞ Traffic Signal	→ ○ Non-Fatal Injury	N Dark
	→ ● Fatality	L Streetlight

Notes:

Collision locations are approximate.
Number and configuration of private driveways is not representative of existing conditions.
* Collision occurred on curved section of roadway.

(Mon) 18:00 07/13/07 CDD
(weekday); time; month/day/year
environment; road surface; lighting

Client: Region of Peel

Project Name: Belfountain EA – Safety Review

Project #: 6776

Exhibit #: A-6

Prepared By: CK
Date: October 2012



Collision Diagram

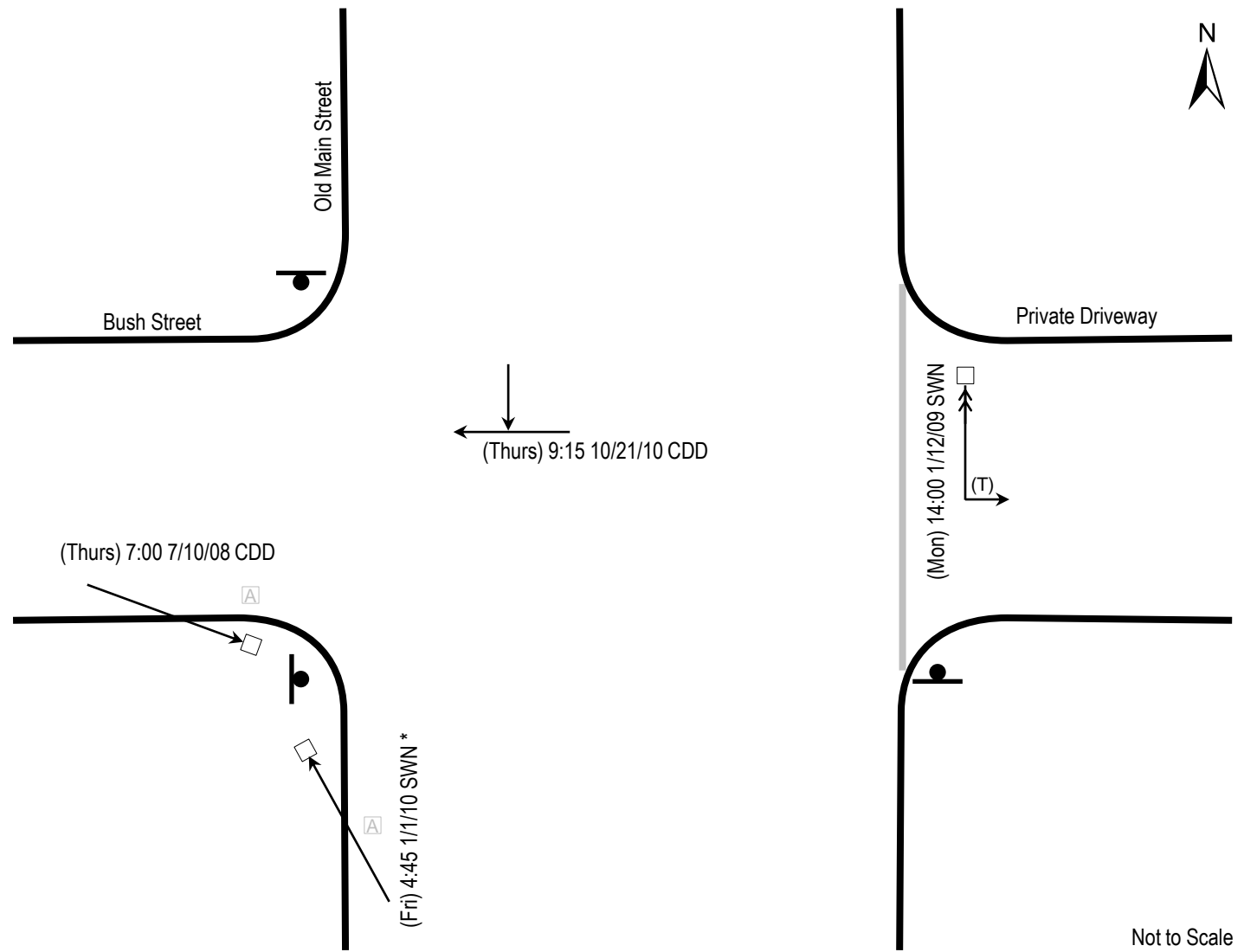
Location ID: INT 1376

Jurisdiction: Region of Peel

Location Description:
Bush Street @ Old Main Street

Period From: January 1, 2006

Period To: December 31, 2010



Key to Symbols			* Collision Orientation Unknown
Vehicle Type	Collision Type	Environment Condition	
→ Automobile	→ → Rear-end	C Clear	(Mon) 18:00 07/13/07 CDD (weekday); time; month/day/year environment; road surface; lighting Client: Region of Peel Project Name: Belfountain EA – Safety Review Project #: 6776 Exhibit #: A-7 Prepared By: CK Date: October 2012
(T) → Truck	→ ↘ Turning Movement	R Rain	
(B) → Bus	→ □ Fixed Object	S Snow	
(C) → Bicycle	→ ▲ Animal	F Fog	
(P) → Pedestrian	→ ~ Out of Control	Road Surface Condition	
Vehicle Movement	→ ↗ Angle	D Dry	
↶ Left	→ ↘ Sideswipe (same direction)	W Wet	
→ Straight	→ ↘ Sideswipe (opposite direction)	S Snow	
↷ Right		I Ice	
↔ Reversing		Light Condition	
Traffic Control	Crash Severity	D Daylight	
⬮ Stop Sign	→ → Property Damage Only	A Dawn/Dusk	
⊞ Traffic Signal	→ ○ Non-Fatal Injury	N Dark	
	→ ● Fatality	L Streetlight	



Collision Diagram

Location ID: 425

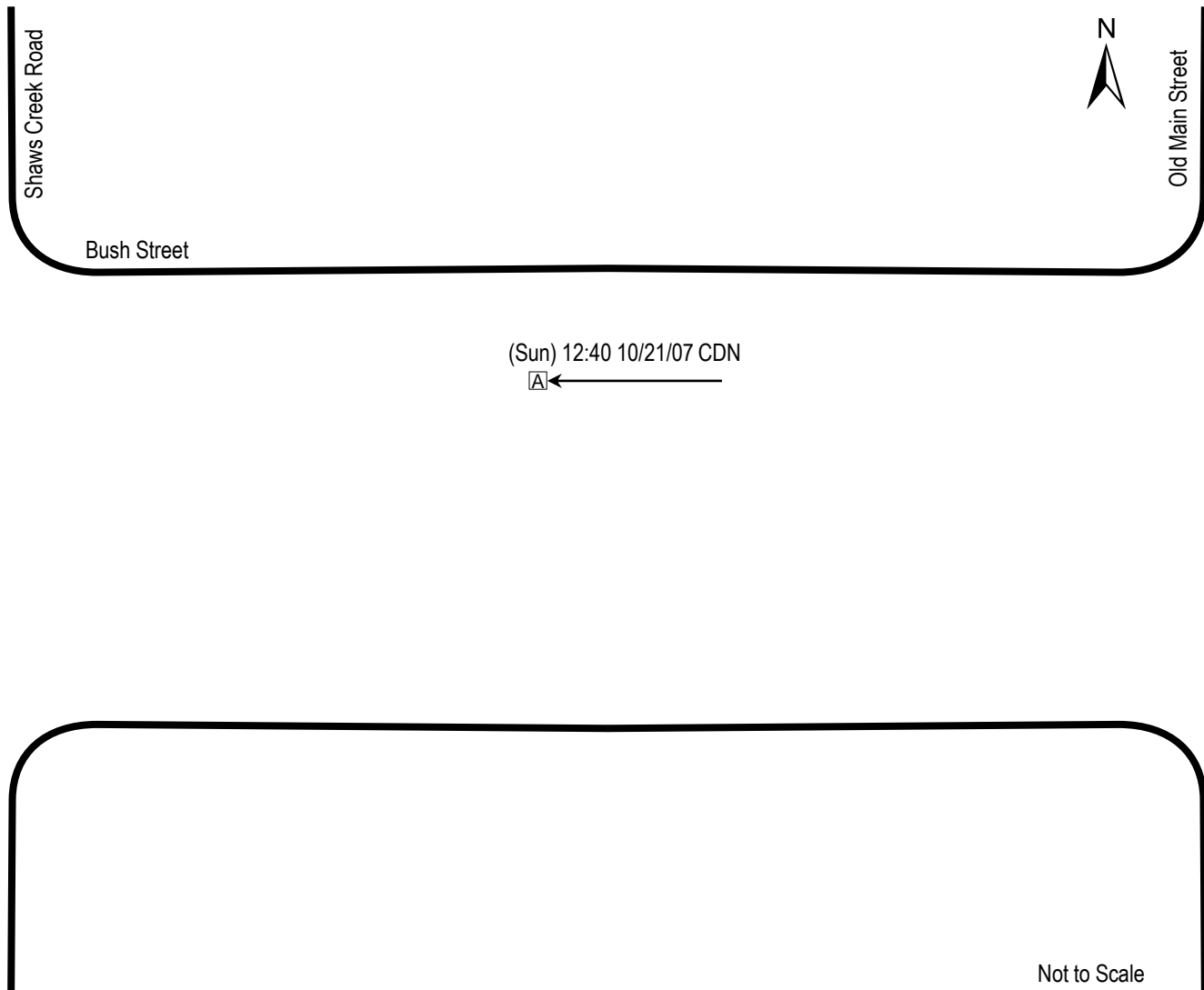
Jurisdiction: Region of Peel

Location Description:

Bush Street between
Shaws Creek Road and Old Main Street

Period From: January 1, 2006

Period To: December 31, 2010



Not to Scale

Key to Symbols			Notes: Collision locations are approximate.
Vehicle Type	Collision Type	Environment Condition	
→ Automobile	→ → Rear-end	C Clear	(Mon) 18:00 07/13/07 CDD (weekday); time; month/day/year environment; road surface; lighting
(T) → Truck	→ ↙ Turning Movement	R Rain	
(B) → Bus	→ □ Fixed Object	S Snow	
(C) → Bicycle	→ □ A Animal	F Fog	
(P) → Pedestrian	→ ⚡ Out of Control	Road Surface Condition	
Vehicle Movement	→ ↗ Angle	D Dry	
↗ Left	↗ ↘ Sideswipe (same direction)	W Wet	Client: Region of Peel
→ Straight	↗ ↘ Sideswipe (opposite direction)	S Snow	Project Name: Belfountain EA – Safety Review
↘ Right		I Ice	Project #: 6776
↔ Reversing		Light Condition	Exhibit #: A-8
Traffic Control	Crash Severity	D Daylight	Prepared By: CK
⊥ Stop Sign	→ → Property Damage Only	A Dawn/Dusk	Date: October 2012
⊞ Traffic Signal	→○→ Non-Fatal Injury	N Dark	
	→●→ Fatality	L Streetlight	

Collision Diagram

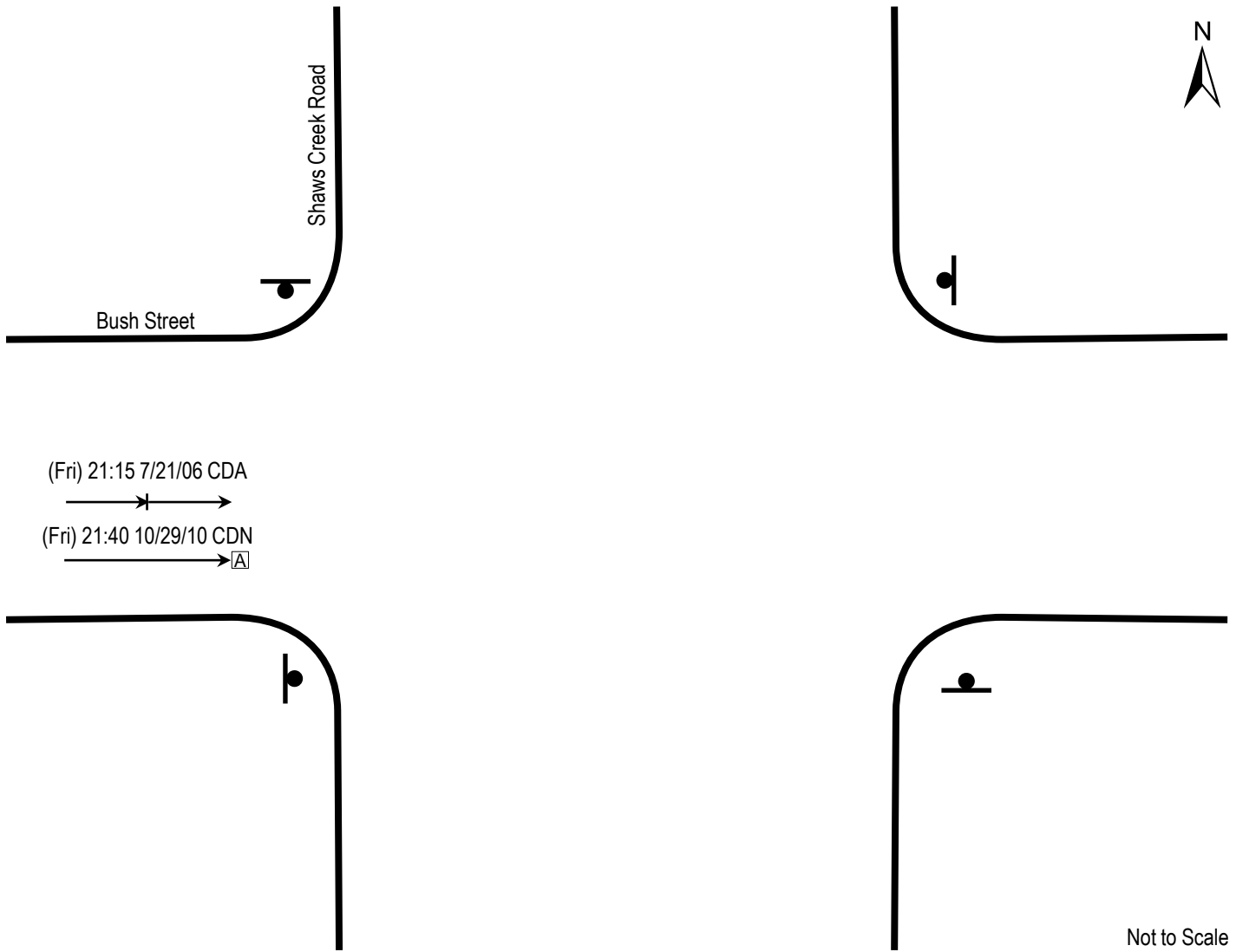
Location ID: INT 1451

Jurisdiction: Region of Peel

Location Description:
Bush Street @ Shaws Creek Road

Period From: January 1, 2006

Period To: December 31, 2010



Key to Symbols

Vehicle Type	Collision Type	Environment Condition	
→ Automobile (T) → Truck (B) → Bus (C) → Bicycle (P) → Pedestrian	→ → Rear-end →└┘ Turning Movement →□ Fixed Object →⊠ Animal →~ Out of Control →↗ Angle →↘ Sideswipe (same direction) →↙ Sideswipe (opposite direction)	C Clear R Rain S Snow F Fog	
Vehicle Movement	Crash Severity	Road Surface Condition	
↶ Left → Straight ↷ Right ↔ Reversing	→ → Property Damage Only →○→ Non-Fatal Injury →●→ Fatality	D Dry W Wet S Snow I Ice	
Traffic Control		Light Condition	
● Stop Sign ⊞ Traffic Signal		D Daylight A Dawn/Dusk N Dark L Streetlight	



Collision Diagram

Location ID: INT 1650

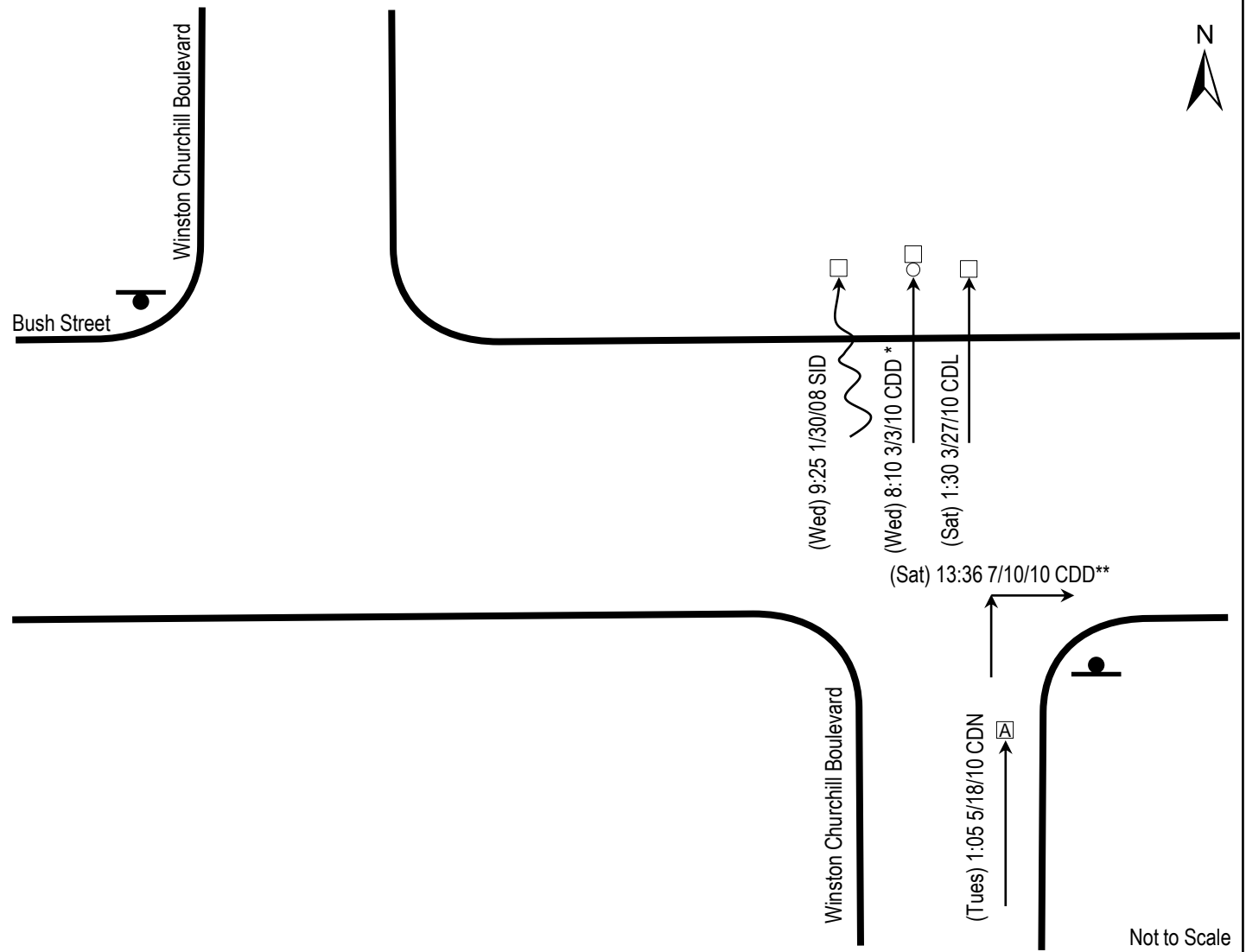
Jurisdiction: Region of Peel

Location Description:

Bush Street @ Winston Churchill Boulevard

Period From: January 1, 2006

Period To: December 31, 2010



Key to Symbols			* Intentional Accident ** Initial Impact Only (Multiple Impact Collision)
Vehicle Type	Collision Type	Environment Condition	
→ Automobile	→ → Rear-end	C Clear	
(T) → Truck	→ ↙ Turning Movement	R Rain	
(B) → Bus	→ □ Fixed Object	S Snow	
(C) → Bicycle	→ A Animal	F Fog	
(P) → Pedestrian	→ wavy Out of Control	Road Surface Condition	
Vehicle Movement	→ ↗ Angle	D Dry	
↗ Left	→ ↘ Sideswipe (same direction)	W Wet	
→ Straight	↘ ↗ Sideswipe (opposite direction)	S Snow	
↘ Right		I Ice	
↔ Reversing		Light Condition	
Traffic Control	Crash Severity	D Daylight	
⊥ Stop Sign	→ → Property Damage Only	A Dawn/Dusk	
⊞ Traffic Signal	→○→ Non-Fatal Injury	N Dark	
	→●→ Fatality	L Streetlight	
		(Mon) 18:00 07/13/07 CDD (weekday); time; month/day/year environment; road surface; lighting	
		Client: Region of Peel	
		Project Name: Belfountain EA – Safety Review	
		Project #: 6776	
		Exhibit #: A-10	
		Prepared By: CK Date: October 2012	



Collision Diagram

Location ID: 986

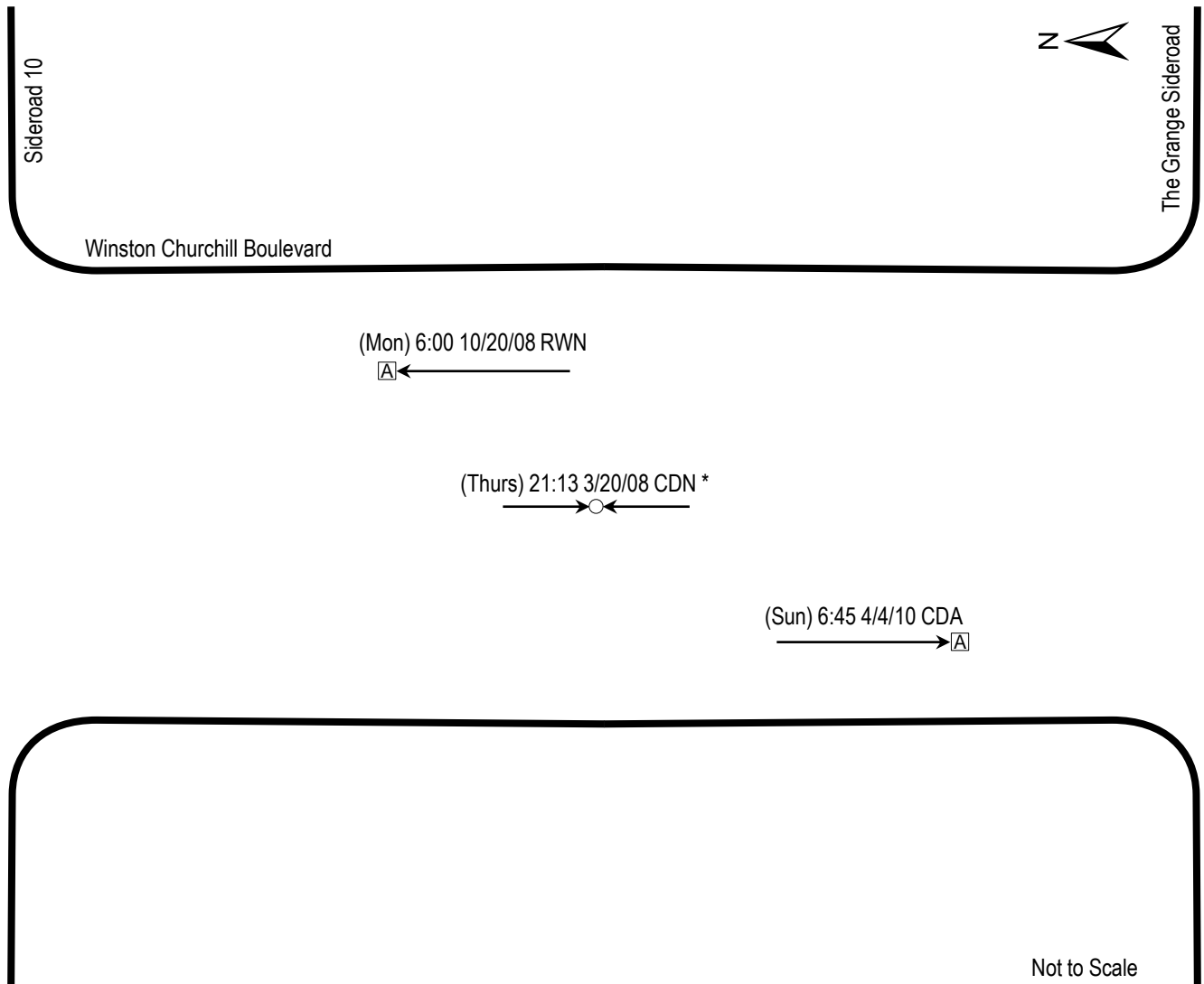
Jurisdiction: Region of Peel

Location Description:

Winston Churchill Boulevard between
Sideroad 10 and The Grange Sideroad

Period From: January 1, 2006

Period To: December 31, 2010



Key to Symbols			Notes: Collision locations are approximate. *Alcohol Impaired
Vehicle Type	Collision Type	Environment Condition	
→ Automobile	→ → Rear-end	C Clear	(Mon) 18:00 07/13/07 CDD (weekday); time; month/day/year environment; road surface; lighting
(T) → Truck	→ ↘ Turning Movement	R Rain	
(B) → Bus	→ □ Fixed Object	S Snow	Client: Region of Peel
(C) → Bicycle	→ △ Animal	F Fog	
(P) → Pedestrian	→ ⚡ Out of Control	Road Surface Condition	Project Name: Belfountain EA – Safety Review
Vehicle Movement	→ ↗ Angle	D Dry	
↖ Left	→ ↘ Sideswipe (same direction)	W Wet	Project #: 6776
→ Straight	→ ↗ Sideswipe (opposite direction)	S Snow	
↘ Right		I Ice	Project #: 6776
↔ Reversing		Light Condition	
Traffic Control	Crash Severity	D Daylight	Exhibit #: A-11
⊥ Stop Sign	→ → Property Damage Only	A Dawn/Dusk	
⊞ Traffic Signal	→ ○ Non-Fatal Injury	N Dark	Prepared By: CK Date: October 2012
	→ ● Fatality	L Streetlight	



Collision Diagram

Location ID: 983L

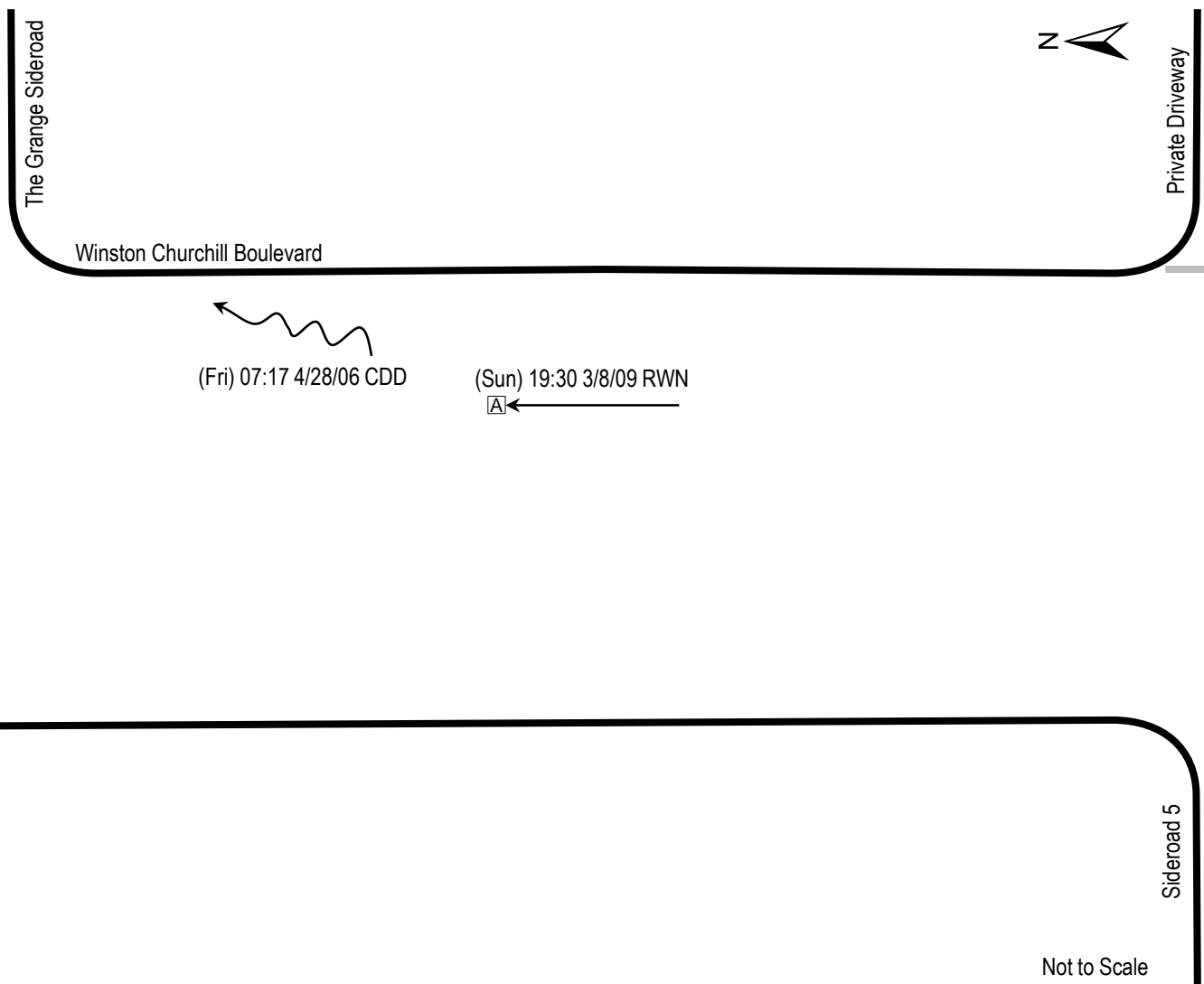
Jurisdiction: Region of Peel

Location Description:

Winston Churchill Boulevard between
The Grange Sideroad and Sideroad 5

Period From: January 1, 2006

Period To: December 31, 2010



Key to Symbols			Notes: Collision locations are approximate.
Vehicle Type	Collision Type	Environment Condition	
→ Automobile	→ → Rear-end	C Clear	(Mon) 18:00 07/13/07 CDD (weekday); time; month/day/year environment; road surface; lighting
(T) → Truck	→ ↙ Turning Movement	R Rain	
(B) → Bus	→ □ Fixed Object	S Snow	Client: Region of Peel
(C) → Bicycle	→ □ Animal	F Fog	
(P) → Pedestrian	→ □ Animal	Road Surface Condition	Project Name: Belfountain EA – Safety Review
Vehicle Movement	→ ↗ Out of Control	D Dry	
↙ Left	→ ↘ Angle	W Wet	Project #: 6776
→ Straight	→ ↘ Sideswipe (same direction)	S Snow	
↘ Right	↘ ↘ Sideswipe (opposite direction)	I Ice	Exhibit #: A-12
↔ Reversing		Light Condition	
Traffic Control	Crash Severity	D Daylight	Prepared By: CK Date: October 2012
⊥ Stop Sign	→ → Property Damage Only	A Dawn/Dusk	
⊞ Traffic Signal	→○→ Non-Fatal Injury	N Dark	
	→●→ Fatality	L Streetlight	

Collision Diagram

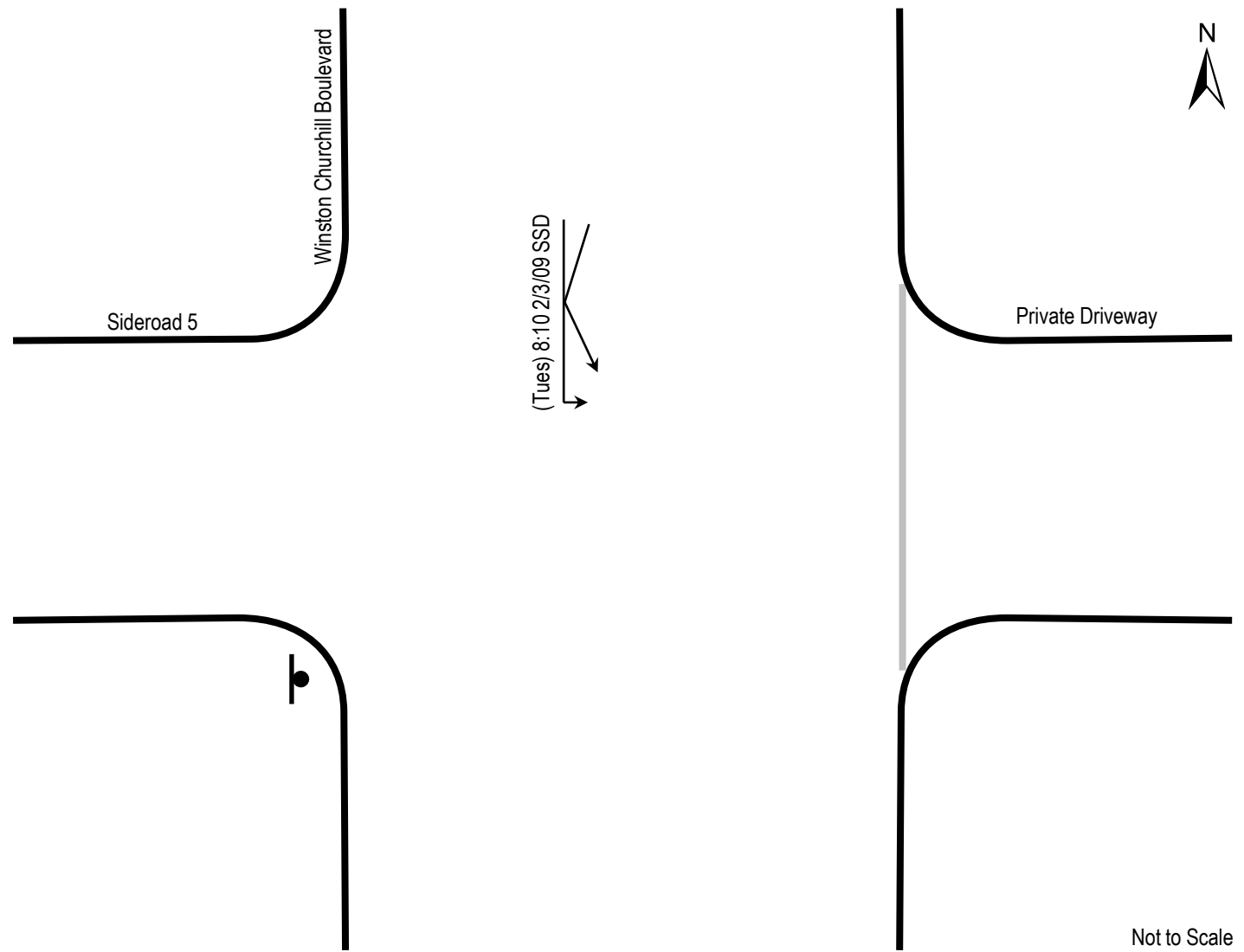
Location ID: INT 15594

Jurisdiction: Region of Peel

Location Description:
Winston Churchill Boulevard @ Sideroad 5

Period From: January 1, 2006

Period To: December 31, 2010



Key to Symbols

Vehicle Type	Collision Type	Environment Condition	
→ Automobile (T) → Truck (B) → Bus (C) → Bicycle (P) → Pedestrian	→ → Rear-end → ↘ Turning Movement → □ Fixed Object → ▢ Animal → ~ Out of Control → ↗ Angle → ↘ Sideswipe (same direction) → ↗ Sideswipe (opposite direction)	C Clear R Rain S Snow F Fog	
Vehicle Movement ↶ Left → Straight ↷ Right ↔ Reversing		Road Surface Condition D Dry W Wet S Snow I Ice	(Mon) 18:00 07/13/07 CDD (weekday); time; month/day/year environment; road surface; lighting
Traffic Control ● Stop Sign ☐ Traffic Signal	Crash Severity → → Property Damage Only → ○ → Non-Fatal Injury → ● → Fatality	Light Condition D Daylight A Dawn/Dusk N Dark L Streetlight	Client: Region of Peel Project Name: Belfountain EA – Safety Review Project #: 6776 Exhibit #: A-13 Prepared By: CK Date: October 2012



Collision Diagram

Location ID: 984L

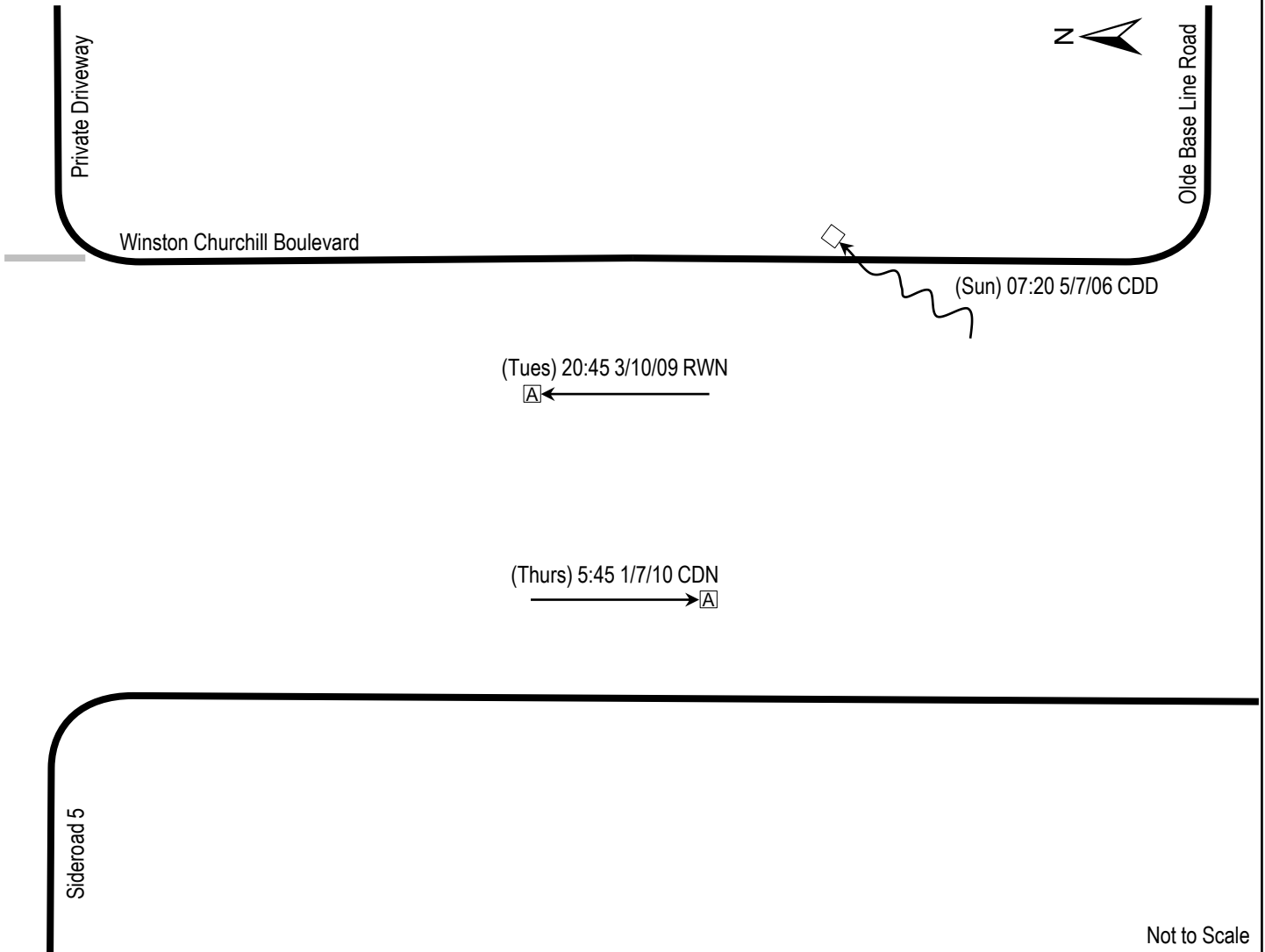
Jurisdiction: Region of Peel

Location Description:

Winston Churchill Boulevard between
Sideroad 5 and Olde Base Line Road

Period From: January 1, 2006

Period To: December 31, 2010



Not to Scale

Key to Symbols			Notes: Collision locations are approximate.
Vehicle Type	Collision Type	Environment Condition	
→ Automobile	→+→ Rear-end	C Clear	(Mon) 18:00 07/13/07 CDD (weekday); time; month/day/year environment; road surface; lighting
(T) → Truck	→↙ Turning Movement	R Rain	
(B) → Bus	→□ Fixed Object	S Snow	
(C) → Bicycle	→A Animal	F Fog	
(P) → Pedestrian	→~ Out of Control	Road Surface Condition	Client: Region of Peel
Vehicle Movement	→↗ Angle	D Dry	
↖ Left	→↘ Sideswipe (same direction)	W Wet	
→ Straight	↘↗ Sideswipe (opposite direction)	S Snow	Project Name: Belfountain EA – Safety Review
↘ Right		I Ice	
↔ Reversing		Light Condition	Project #: 6776
Traffic Control	Crash Severity	D Daylight	Exhibit #: A-14
⊥ Stop Sign	→+→ Property Damage Only	A Dawn/Dusk	
⊞ Traffic Signal	→○→ Non-Fatal Injury	N Dark	
	→●→ Fatality	L Streetlight	Prepared By: CK
			Date: October 2012



Collision Diagram

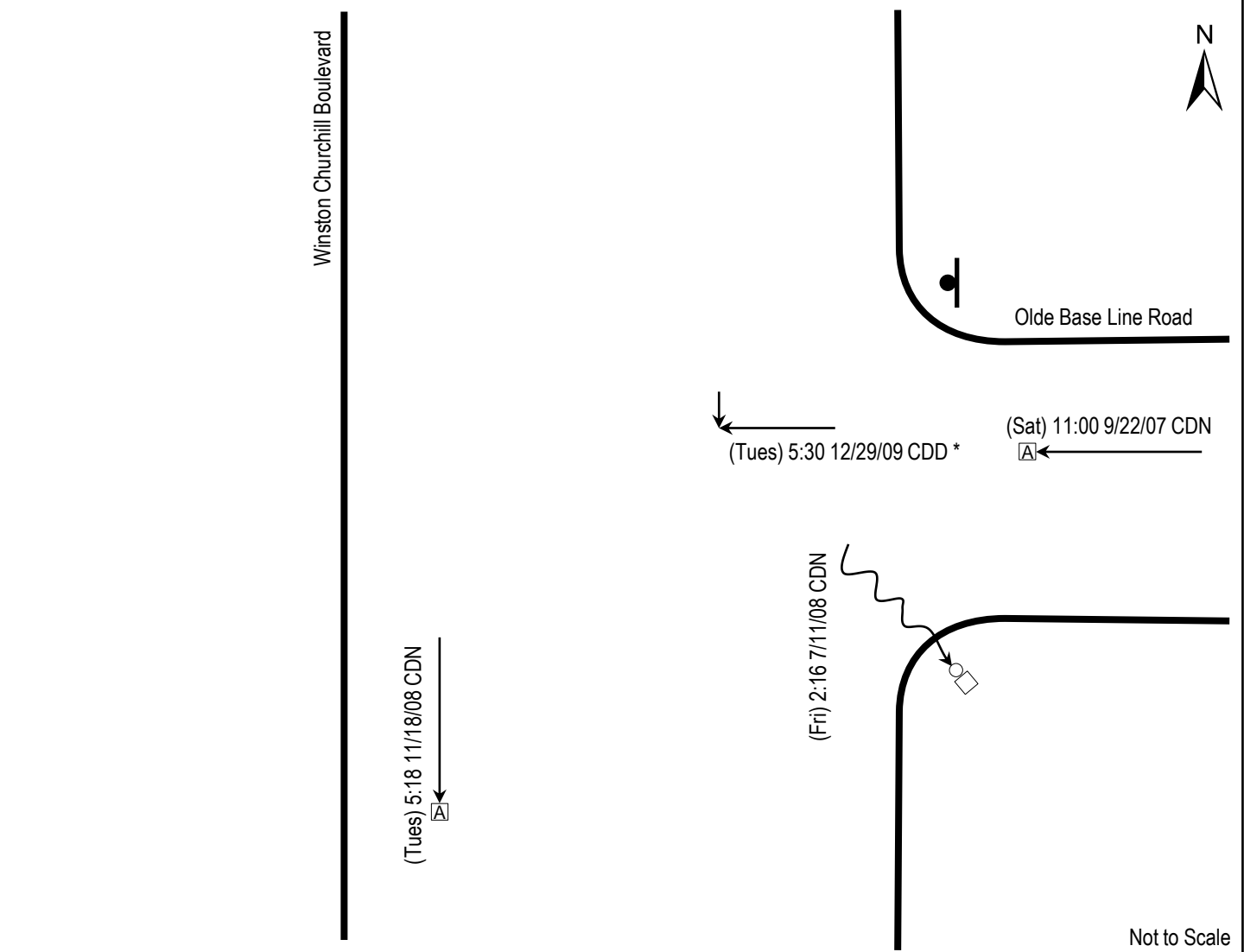
Location ID: INT 2977

Jurisdiction: Region of Peel

Location Description:
Olde Base Line Road @ Winston Churchill Boulevard

Period From: January 1, 2006

Period To: December 31, 2010



Key to Symbols			* Collision Orientation Unknown
Vehicle Type	Collision Type	Environment Condition	
→ Automobile	→+→ Rear-end	C Clear	(Mon) 18:00 07/13/07 CDD (weekday); time; month/day/year environment; road surface; lighting
(T) → Truck	→↘ Turning Movement	R Rain	
(B) → Bus	→□ Fixed Object	S Snow	
(C) → Bicycle	→▲ Animal	F Fog	
(P) → Pedestrian	→⚡ Out of Control	Road Surface Condition	Client: Region of Peel
Vehicle Movement	→↗ Angle	D Dry	
↙ Left	→↘ Sideswipe (same direction)	W Wet	
→ Straight	↘↗ Sideswipe (opposite direction)	S Snow	Project Name: Belfountain EA – Safety Review
↘ Right		I Ice	
↔ Reversing		Light Condition	Project #: 6776
Traffic Control	Crash Severity	D Daylight	Exhibit #: A-15
⬮ Stop Sign	→+→ Property Damage Only	A Dawn/Dusk	
⊞ Traffic Signal	→○→ Non-Fatal Injury	N Dark	
	→●→ Fatality	L Streetlight	Prepared By: CK
			Date: October 2012



Collision Diagram

Location ID: 80

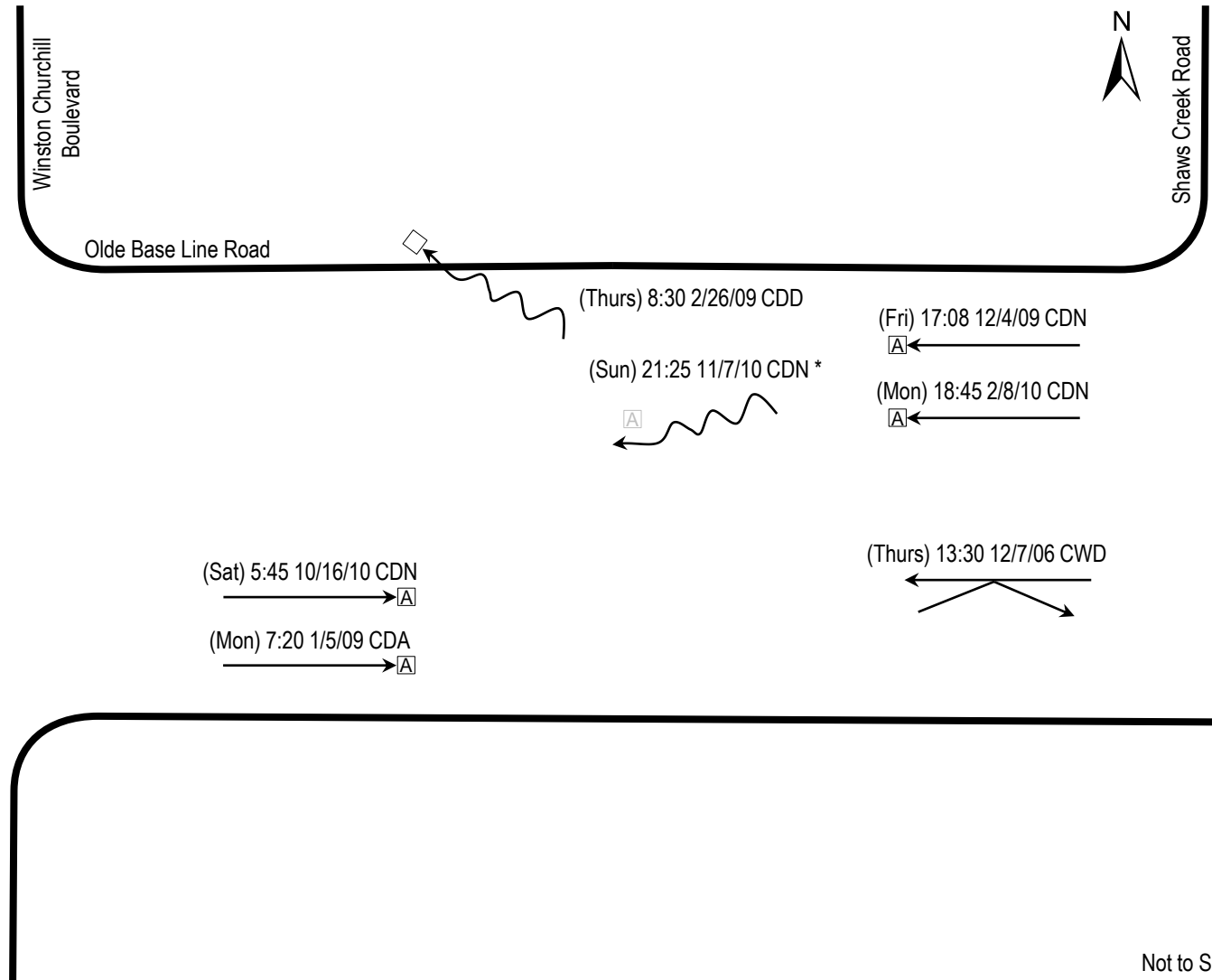
Jurisdiction: Region of Peel

Location Description:

Olde Base Line Road between
Winston Churchill Boulevard and Shaws Creek Road

Period From: January 1, 2006

Period To: December 31, 2010



Key to Symbols

Vehicle Type	Collision Type	Environment Condition
→ Automobile	→ → Rear-end	C Clear
(T) → Truck	→ ↙ Turning Movement	R Rain
(B) → Bus	→ □ Fixed Object	S Snow
(C) → Bicycle	→ A Animal	F Fog
(P) → Pedestrian	→ ~ Out of Control	Road Surface Condition
Vehicle Movement	→ ↗ Angle	D Dry
↖ Left	↔ Sideswipe (same direction)	W Wet
→ Straight	↔ Sideswipe (opposite direction)	S Snow
↘ Right		I Ice
↔ Reversing		Light Condition
Traffic Control	Crash Severity	D Daylight
⊥ Stop Sign	→ → Property Damage Only	A Dawn/Dusk
⊞ Traffic Signal	→○→ Non-Fatal Injury	N Dark
	→●→ Fatality	L Streetlight

Notes:

Collision locations are approximate.

•Avoidance of Animal

(Mon) 18:00 07/13/07 CDD
(weekday); time; month/day/year
environment; road surface; lighting

Client: Region of Peel

Project Name: Belfountain EA – Safety Review

Project #: 6776

Exhibit #: A-16

Prepared By: CK
Date: October 2012



Collision Diagram

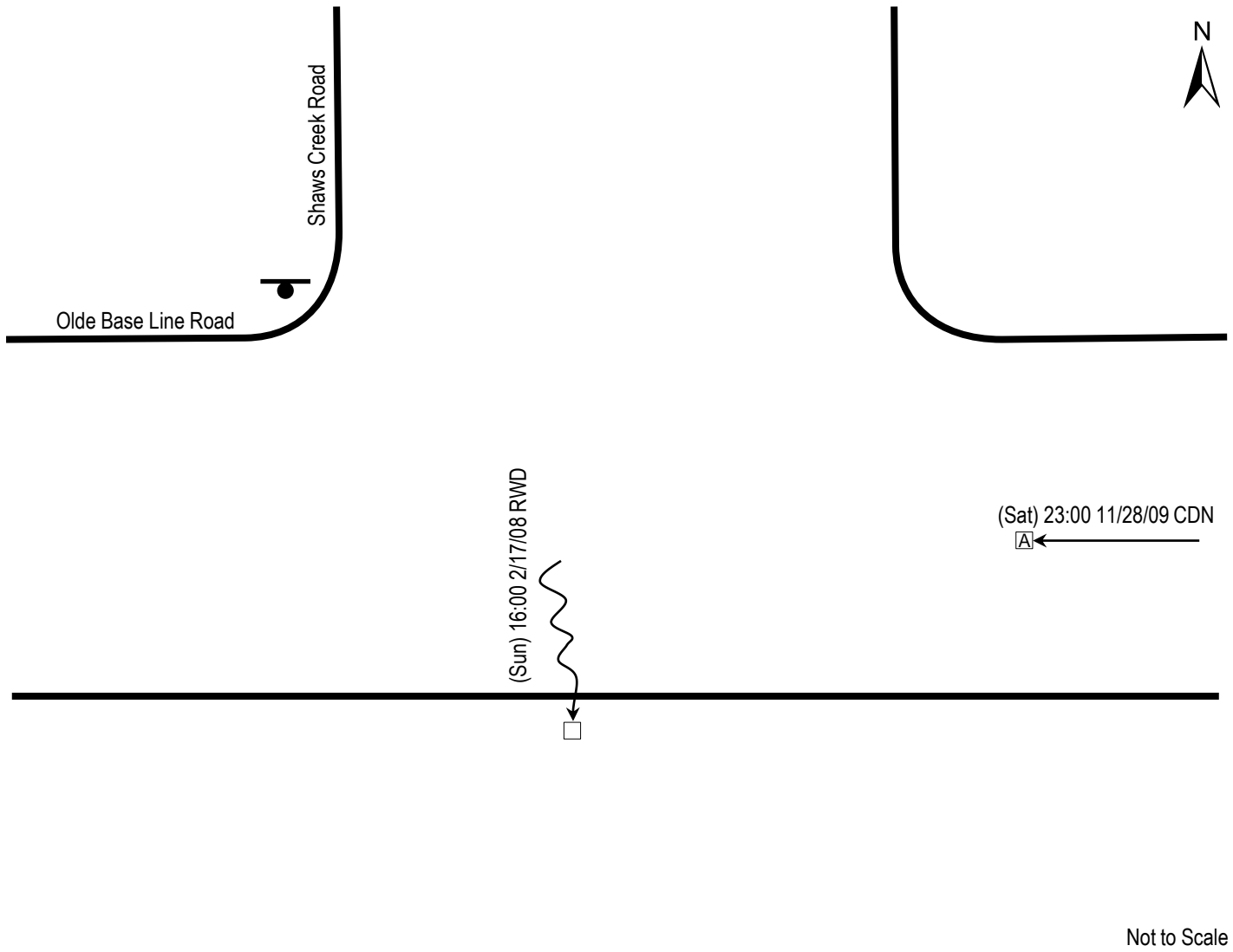
Location ID: INT 2633

Jurisdiction: Region of Peel

Location Description:
Olde Base Line Road @ Shaws Creek Road

Period From: January 1, 2006

Period To: December 31, 2010



Key to Symbols

Vehicle Type	Collision Type	Environment Condition
→ Automobile	→ → Rear-end	C Clear
(T) → Truck	→ ↙ Turning Movement	R Rain
(B) → Bus	→ □ Fixed Object	S Snow
(C) → Bicycle	→ □ Animal	F Fog
(P) → Pedestrian	→ ⚡ Out of Control	Road Surface Condition
Vehicle Movement	→ ↗ Angle	D Dry
↗ Left	↗ ↘ Sideswipe (same direction)	W Wet
→ Straight	↗ ↘ Sideswipe (opposite direction)	S Snow
↘ Right		I Ice
↔ Reversing		Light Condition
Traffic Control	Crash Severity	D Daylight
⊙ Stop Sign	→ → Property Damage Only	A Dawn/Dusk
⊞ Traffic Signal	→○→ Non-Fatal Injury	N Dark
	→●→ Fatality	L Streetlight

(Mon) 18:00 07/13/07 CDD
(weekday); time; month/day/year
environment; road surface; lighting

Client: Region of Peel

Project Name: Belfountain EA – Safety Review

Project #: 6776

Exhibit #: A-17

Prepared By: CK
Date: October 2012



Collision Diagram

Location ID: 72L

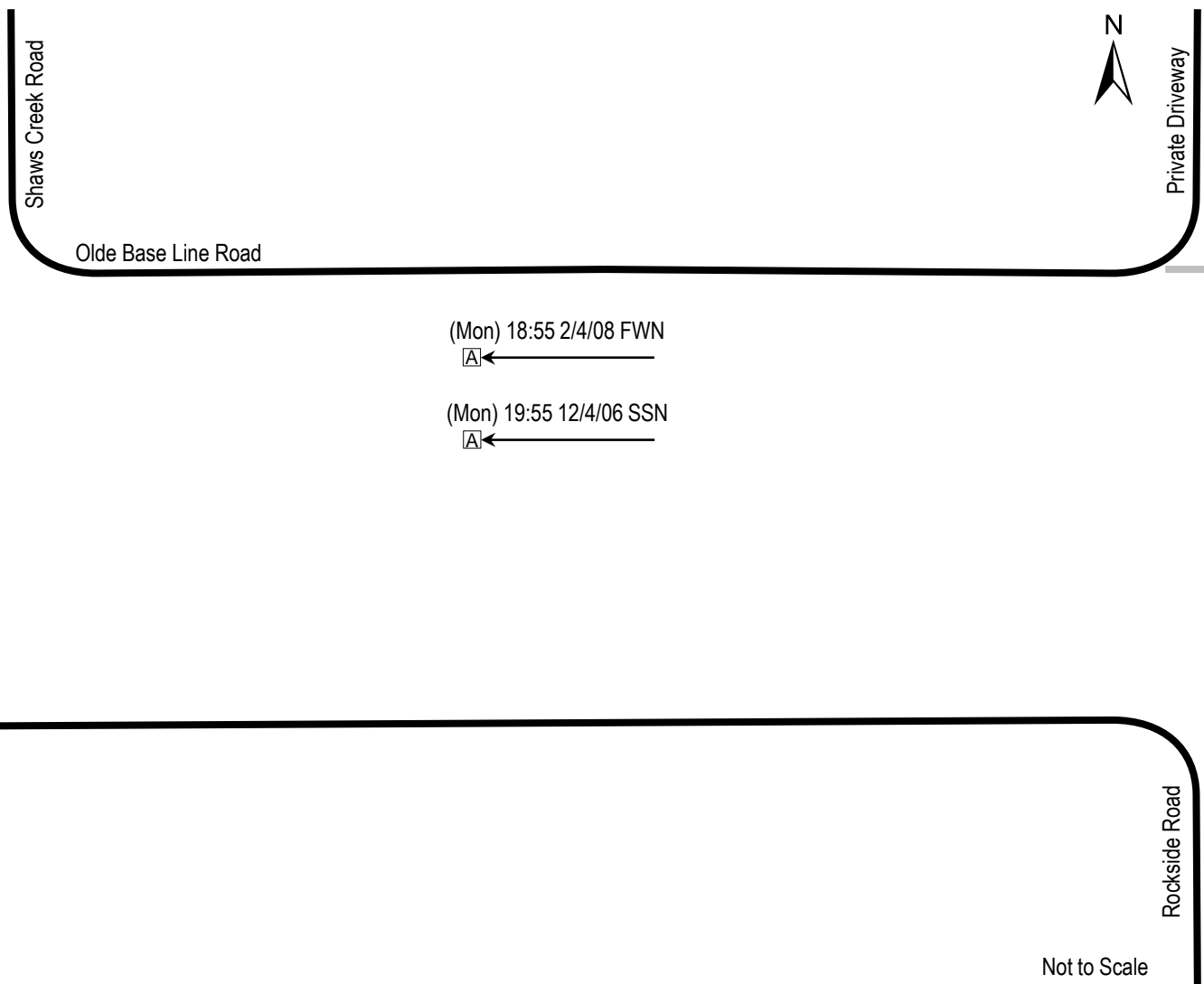
Jurisdiction: Region of Peel

Location Description:

Olde Base Line Road between
Shaws Creek Road and Rockside Road

Period From: January 1, 2006

Period To: December 31, 2010



Key to Symbols			Notes: Collision locations are approximate.
Vehicle Type	Collision Type	Environment Condition	
→ Automobile	→ → Rear-end	C Clear	(Mon) 18:00 07/13/07 CDD (weekday); time; month/day/year environment; road surface; lighting
(T) → Truck	→ ↙ Turning Movement	R Rain	
(B) → Bus	→ □ Fixed Object	S Snow	
(C) → Bicycle	→ A Animal	F Fog	
(P) → Pedestrian	→ ~ Out of Control	Road Surface Condition	
Vehicle Movement	→ ↑ Angle	D Dry	
→ ↑ Left	→ ↘ Sideswipe (same direction)	W Wet	Client: Region of Peel
→ → Straight	→ ↙ Sideswipe (opposite direction)	S Snow	Project Name: Belfountain EA – Safety Review
→ ↓ Right		I Ice	Project #: 6776
↔ Reversing		Light Condition	Exhibit #: A-18
Traffic Control	Crash Severity	D Daylight	Prepared By: CK Date: October 2012
⊥ Stop Sign	→ → Property Damage Only	A Dawn/Dusk	
⊞ Traffic Signal	→○→ Non-Fatal Injury	N Dark	
	→●→ Fatality	L Streetlight	