

CHRISTMAS FESTIVITIES



Your BCO and the Belfountain Village Church held a marvelous buffet dinner at [Belfountain Village Church's Reid Hall](#) on **Saturday!**

It was nearly standing room only! Dinner was followed by singing Christmas carols and tree lighting. Details: 🌐

LUMINARA / LUMINAIRE



A glorious site in CME

Luminaire is a breathtaking spectacle of lights at night, line the bottom of your property or your driveway and see the outstanding effects.

Traditional Christmas Eve luminaries are said to originate from Spaniard merchants. They were impressed with the paper lanterns from the Chinese culture and decided to make their own version when they returned to New Spain; particularly during the Christmas season.

Traditionally, luminaries are made from brown paper bags weighted down with sand and illuminated from within by a lit candle. These are typically arranged in rows placed 2 to 3 feet apart to create large and elaborate displays and create a beautiful effect. The hope among Roman Catholics is that the lights will guide the spirit of the Christ child to one's home.

No matter where you place the homemade beacons, you'll find that they provide a pleasant reminder of simpler Christmas celebrations ... and a surprisingly warm, festive holiday greeting to those who pass or approach your home.

Excerpt from Christmas Quilt by Barbara Baldwin –

*In The Spirit of Christmas
So light a lantern, its glow to shine,
Across the miles on Christmas Eve.
To remind us all, young and old,
Of that wonderful magic – if you believe.*

We encourage new families in the hamlet to join us in celebrating "Luminaire in Belfountain" on December 24th.

Order your bags (20 bags for \$2.00) by calling 519 927 9087 and arrange for pick up.

By Madelon Stevenson 🌐

RECONSTRUCTING BELFOUNTAIN

Our Community Hall is receiving a major facelift this winter. The septic system was replaced in November and the roof replacement is slated to start in December.



Scaffolding in place

Demolition of the ceiling has finished with some interesting discoveries, such as the chimney to nowhere!



And evidence of fauna.

As of Dec 4th, the target completion date is spring 2016 due to additional restoration of the exterior walls. 🌐

Arch Bridge - Major Rebuild

The bridge on Forks of the Credit River Road is undergoing a major replacement.

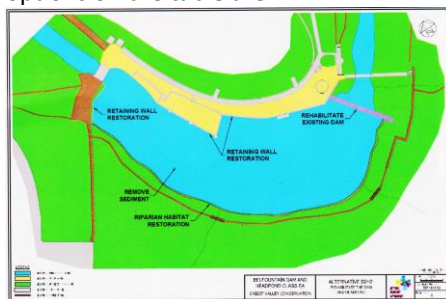


Speaking with a representative of Peel Region on Dec 3rd, the crew now needs to dig a few feet deeper to establish the base for the footings for the new wall. This will delay the reopening of the bridge to traffic, hopefully to be completed before Christmas.

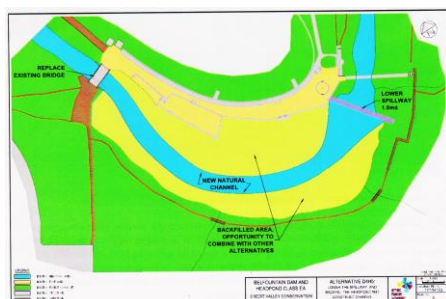
CVC BELFOUNTAIN COMPLEX

Since the November Public Information Committee session, the CVC project team has focused on the options for the Headpond and Dam.

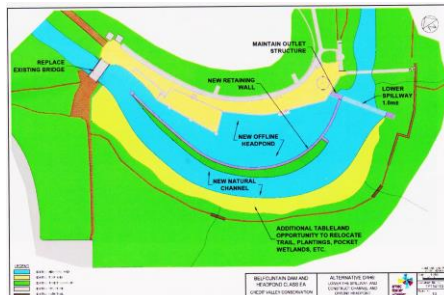
At the Dec 1st PIC #2 meeting the 3 options on the table are:



Rehabilitate the dam and 3 walls



Replace bridge, lower the dam and backfill the pond to create new natural channel. (D4H5)



Replace bridge lower the dam, new retaining wall in pond separating flow. (D4H6)

Details from the Dec 1st PIC now online!

The wish of the BCO is that the CVC control the impact to our hamlet and preserve the cultural character that Charles Mack intended.

A [local resident has voiced concern](#) that the CVC is not listening to concerns raised during these PIC sessions. [Debra Martin-Downs has responded](#), but we will watch for what ensues during the final selection processes in early 2016. We will be seeking the assistance of the Town of Caledon and the Region of Peel on challenges outside the scope of the CVC, i.e. limiting the number of attendees to the park and the resultant traffic and parking overflow into the hamlet.

LOCAL SKATING WORLD CHAMPIONS

Kirsten M.T., a barista in our local Higher Ground coffee shop, and team members of the World Champion Senior Synchronized Skating Team Nexxice are headed to Spain in December. Help support our local athletes.

COMINGS, GOINGS AND CHANGES

Many properties have changed hands this year, so we wish to welcome new residents and fondly bid farewell to those who are departing!

Tammeron Karaim has now sold a major landmark in the hamlet, the General Store / Hotel, closing in the New Year.



We all wait with bated breath to learn who the new owner is and what they might have in mind! Especially now that it has been [designated Heritage](#), which is a free service via the Town of Caledon!



Possibly restore it to 1840s era??

New residents on **Bush Street** are:

- **Harry and Raheleh Hoogkamp**
- **Greta and Carlos** are renovating "Caroline's house".

On **Main St.:**

- **Paris** and her growing family in "Linda's wee cottage"
- **Agnes Zarska** might have her near-total Main St. house renovation done for Christmas!

On **Pinnacle St.:**

- **Tonya Davey and Rick Hill**

We know there are many more, so introduce yourselves! :D

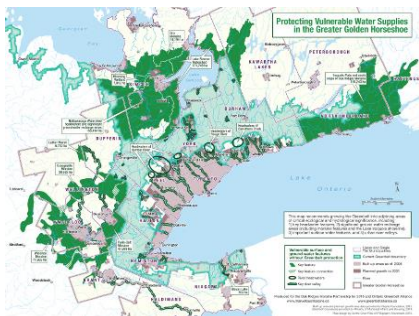
For incoming residents, learn more about Belfountain by [becoming a member of the BCO](#) and to be added to our email distribution list. Membership fees have been waived

We bid farewell to **Lynn and Brian Woods** who have relocated to their beach house in Collingwood. (We know you'll be back and forth!)

OCTOGENARIAN BIRTHDAY FOG?

It was a foggy day November 30th or so we thought, only to find out local long-time Belfountain resident and hamlet oracle **Norm Wrycraft** was celebrating his birthday with a full complement of candles! Neighbour Norm, we wish you a most happy 80th birthday and many more!

GROWING THE GREENBELT



Click [here](#) to see a larger version of the map.

When the Greenbelt was created in 2005, many observers warned that it was not quite big enough to contain poorly-planned, low density, urban sprawl. Over the past 10 years we've seen that the Greenbelt is effective at limiting sprawl but leapfrog development beyond its boundaries threatens to undermine the Greenbelt Plan.

While Belfountain is firmly protected by the Green Belt plan, all land use plans are due for revisiting in 2016. Stay tuned. 🌍

WINTER? WHAT WINTER?

The [Weather Network](#) is predicting December will be quite mild across our region, but a more classic winter pattern is expected to dominate the second half of winter, especially during February. However, we do not expect the cold to become as severe or as persistent as it was during the past two winters. What's your reaction to a milder than normal winter across much of Canada? 🌍



With average temperatures for our area.



With average snowfall for our area.

THE ROUND HOUSE



You drive by it, just east of the Base Line/Creditview intersection, and wonder—what is that round house slowly, oh, so slowly, rising?

Meet Sam Perri, currently residing in “just a regular house” in Caledon East. He’s a retired welder-fitter, and self-described “the touched guy building the igloo.”

Retired early in 2006, he has spent seven years on the 3,200 sq. ft. structure so far, a few hours most days of the week. Just two years to go, he vows.

The crowning moment is to come next summer, a stained glass dome, 30 feet in diameter to be lowered into the roof 36 feet above the ground level floor. “Enough height for palm trees to grow,” says Perri. “And oranges and bananas. I want to get away from winter. I despise winter.”

He’s hoping his daughter will help on the stained glass design. She studied art at Sheridan College. “I’m hoping she’ll do it for free,” he says.

“I’ve heard people call it a mosque, an observatory, and an igloo,” he says. But it's actually “a take-off on the Pantheon in Rome.”

This drive-by observer just calls it the most entrancing building to appear in the Belfountain area in years. Go Sam go!

By David Kendall

2016 EVENTS

AGM – TBD

Under The Maples - June

Lobsterfest - June

Salamander Festival - September

Christmas House Tour – November

BELFOUNTAIN VILLAGE CHURCH

Wednesday – Chat and Snack:

Wednesday night activities are going well. Pastor Fred and Judee show up about 4:30 and are available for visit or a chat while dinner is being prepared. At 6:00 we all sit down to a full meal, followed by an informal discussion time at 7:00 about various topics. This leads into a time of sharing and prayer, ending at 8:00 when everybody goes home. If you just don't feel like cooking on a Wednesday drop by for a **free** meal. If you want you can give us a heads up by emailing Pastor Fred or calling his cell. There is always enough food. This group is growing. We are also looking at a once a month movie beginning in the New Year.

Sunday morning series: Pastor Fred is in the middle of a 10 part series answering the question “**Why Jesus?**” Why is Jesus so central in the Christian faith? What is the big deal with Jesus? You can join us on Sundays or you can receive the written sermon by being on our email list. Service is always followed by coffee, snacks and better still – a great get together.

Monday morning “Fredbits”: Find out what is happening every Monday morning by getting on our email list. Simply email pastorfred@rogers.com to be added.

Coming up:

December 5. We were honoured to host the community annual “**Potluck Dinner**” held in the church’s “Reid Hall” this year due to renovation in the community hall. December 23, 2015 -**Candle light Service:** Come to this great annual tradition.

Hampers: If you know of a needy family who could use a Christmas Hamper let us know. If you want to be a part of putting it all together- let us know.

Mitten tree: We are collecting new mittens and gloves of all sizes, styles or colors for distribution to the needy, just before Christmas. Drop them by on Wednesday evenings or Sunday mornings.

Would you like a visit or chat? Call 416-24-5218 or email pastorfred@rogers.com

By Fred Dyke, Pastor of BVC

SALAMANDER FESTIVAL 2015



The Belfountain Community Organization is pleased to say that this year's Salamander Festival was "one of the best

ever" as reported by many seasoned attendees and newcomers alike.



A gorgeous day for food, fun and frolic.

With the weather Gods smiling on us, the crowds came out early and a steady flow continued throughout the day. They munched on the delicious food choices and with the "[Kewl Fusion](#)" band, fronted by Jerry Staples, grooved to different genres of music.



Many of the vendors were seen bopping to the music behind their booths.

Many of the vendors were seen bopping to the music behind their booths.



Frequent performer Melissa Kerr charmed us as always.



The burger boys hot at it!



Burgers, sausages and HOT BEANS oh my!



Yoga during the musical breaks.

The Belfountain Village Church grounds, the long-time venue for the festival, provided two new additions this year:

Pastor Fred Dyke, the new minister being a master in **judo** encouraged participants to engage in an enthusiastic martial arts demonstration.

The **pie-eating contest** was another activity that saw participants get very competitive!



Blueberry hairdos were evident from that enthusiasm.



Select your honey

The Salamander Festival will reach 20 years of celebrating community in 2016, and as the Belfountain Community Organization strives to preserve the rural way of life, we look forward to seeing everyone out again next year as we reach this milestone.

Credit Valley Conservation Park was a hive of activity with many opportunities to see, touch, and discover a variety of mammals, fish and reptiles. Visitors were impressed with the activities selected and learning opportunities provided by the CVC.



The BCO's Salamander Committee Co-Chairs would like to say THANK YOU to those who contributed to this year's Salamander Festival and made this festival possible.

SPONSORS

Our sponsors played an important part in the success of the year's Salamander Festival and for that we say a huge thank you. Through their cash donations, and quality items donated to the silent auction, purchasing food, hiring musicians and event insurance were taken care of. Many thanks go out to: Bonnie Gordon, Belfountain Chris Ritchie, Remax In The Hills Coxcom Inc., Steve Cockell Grecia Mayer, Belfountain Marks Value Mart, Erin Mary Klien, Sutton Group Central Realty Michele Skawski, IPRO Realty Norm Kiernander, Century 21 Royal Bank, Erin

DONATIONS for SILENT AUCTION

Without your generosity the Silent Auction would not have happened.



Heated bidding at the Silent Auction tables



Recycled and rejuvenated.

SPECIAL VOLUNTEERS – our local youth made sure everything went smoothly.

Charlie Keith - MC

Colin MacLennan Nobrega

Edi Cadham – Volunteer Co-ordinator

Emily Keith

Emma MacLennan Nobrega

Evan Attfield

Meaghan Murry

Megan Wallace

Nineveh Burke

Stacy Mortimer

and members of the BCO

Co-Chairs

Grecia Meyers and Madelon Stevenson



In rapture.

COUNTRY COVER BOYS?

Rodney Salisbury and his Golden Country Classics band make the cover of In the Hills magazine! 🌿

TOWN OF CALEDON 2016 PLAN

The Town is preparing the 2016 Budget 🌍

[Capital Budget \(proposed\)](#)

[Operating Budget \(proposed\)](#)

The predicted impact to taxpayers is an **increase of 3.8%**, based on levies for stormwater and broadband services. The mayor and Council are requesting input from the communities into the Council Workplan. 🌍

WASTE COLLECTION SCHEDULES

When Does It Go? PeelRegion.ca/Waste

Quite an impressive interface for determining your pick up days!



The STOP SPRAWL signs were a BCO initiative to raise awareness among electoral candidates and visitors to the area about our “Small is Beautiful” philosophy.

BELFOUNTAIN T SHIRTS

Belfountain “Small is Beautiful” T-shirts were created in 2014 to help raise funds and to express our pride in our neighbourhood. T shirts will likely be available again in 2016.



Our T-Shirt models

Be ready for spring! :D

If you are interested in T-shirts or Stop Sprawl signs, please email:

TheView@belfountain.ca

THE VIEW SEEKS CONTRIBUTORS AND NEW EDITOR

Do you have a yen to write and edit? Are you interested in collecting community news to share with your Belfountain and area neighbours?

The View from Belfountain is looking for story contributors and a new editor.

Contact us at theview@belfountain.ca for more information.

THE VIEW FROM BELFOUNTAIN

Available online at Belfountain.ca

Have News For The View? If you would like to write an article or have news of the comings and goings of Belfountain and area residents, we invite you to contact us at: theview@belfountain.ca - [News for The View](#)

This edition's contributing Editors: Grecia Meyers, David Kendall, Madelon Stevenson Fred Dyke and Darryl Mabee.

Our organization accepts no liability for the content. Any views or opinions presented in this newsletter are solely those of the author and do not necessarily represent those of the organization.

Belfountain.ca

Facebook.com/belfountaincommunity

SMALL IS BEAUTIFUL



BELFOUNTAIN COMMUNITY ORGANIZATION (BCO)

MEMBERSHIP FORM

The BCO Mission Statement

**Committed to Preserving the Rural,
Heritage and Environmental Integrity
of the Hamlet of Belfountain and its Environs**

Membership Eligibility

Adult (18+ years) property owner or resident in the area bounded by:

North: Regional Road 124 (Charleston Sideroad), between Winston Churchill Boulevard and Mississauga Road

South: The Grange Sideroad (both sides), from Winston Churchill Blvd. east to the edge of the Niagara Escarpment

West: Winston Churchill Blvd. (both sides), from The Grange Sideroad north to Charleston Sideroad (RR 124)

East: Mississauga Road (north of the Forks of the Credit) and the edge of the Niagara Escarpment in the south

Membership is Free!

Membership entitles you as a BCO Member to one vote on issues pertinent to the community. Members are to be present at the meeting when a vote is held; no proxies allowed, we want your involvement in your community!

The Membership fee has been waived to encourage residents to be more involved with their community!

Future Membership Communication

Please provide your e-mail address(es). We issue meeting notes and other items of interest on a periodic basis.

Neither your e-mail nor Canada Post address(es) will be shared outside of the BCO; we value your privacy and will strive to protect it.

DONATIONS are gratefully received. Cheques only please; payable to the 'Belfountain Community Organization'.

Addressed to:

Belfountain Community Organization,

P.O. Box 15,

Erin, Ontario,

NOB 1T0

BCO Board of Directors

Elected Directors vote for the 5 executive positions (President, two Vice-Presidents, a Secretary and a Treasurer) at the first Board meeting after the AGM. The remaining 10 are Directors-at-Large. Let us know if you would like to run for election to the BCO Board of Directors.

Yes, I would like to run for election to the BCO Board of Directors

☐

Name(s): _____

E-mail Address(es): _____

Canada Post Address: _____

(The above information may be emailed to Membership@Belfountain.ca)

Acknowledgement

Thank you for providing your e-mail address for us to communicate. Visit www.belfountain.ca from time to time to find out what's new. The BCO is elected by you, to represent you in matters that impact our hamlet, for you to have your voice heard, no matter the issue or challenge at hand.

Please attend the 2016 AGM, on a date and at a location TBD.