



www.belfountainvillage.org

# The View from Belfountain

August 2006

## The View from Here

**On September 14 at 7:30 p.m. in the Belfountain Community Hall will occur the most important meeting since the closing of the stone quarries a century ago.**

In that historic era, around 1910, scores of families began packing up and abandoning the once thriving village. Now the opposite is about to happen. Belfountain's population is on the verge of doubling. Every family in the village will be directly affected.

This meeting, an information session hosted by the BCPO, is to introduce to Belfountain residents an Enterac Property Corp.—now known as Orb—development plan to build 66 houses on the 178-acre Enterac property south and east of the village. The meeting will hear from Orb reps Toby Barwick and Glen Schnarr, Caledon councillors Jim Wallace and Richard Paterak, Robert Borak, an award-winning architect with strong environmental ties, and an expert from Peel Region.

Of course, the businesses in the village will love the expansion. But will you?

To assist our readers in preparing for that meeting *The View* has interviewed several pivotal figures in the plan who are not scheduled to speak.



Photo by Charles Peyton

*Sarah inspects the solitary well on Orb land.*

**Erin Water Officials:** The development will sink or swim on its water supply. Hydrology studies in the 1990s show the local ground water resource is too fragile to allow major new wells. So Orb proposes buying water from the Town of Erin.

"The region spoke with me a year or two ago," said Erin Mayor Rod Finnie. "I'm not opposed to considering the idea. My first concern is to look after Erin's needs, but neighbours do help each other.

"Our hydro-geologist has told us we have lots of water although it would require drilling another well. But delivery of the resource would be the complicating factor—the devil is in the details."

One detail would be a pipeline of probably twelve-inch diameter to supply the current homes of Belfountain and the additional ones planned, said Erin water foreman Joe Babin. A line that big would allow for future growth at Belfountain as well as emergency flow needs in the event of fire, he said.

Erin completed a ground water protection study two years ago, which showed that they have abundant resources north of Erin toward Hillsburgh where each of the two towns has two wells. "We're not even close to our capacity," said Mr. Babin. Erin water has some 2,500 customers, he added.

"I don't think there is any fear here of water shortage," seconded Louise Warren, water billing officer for Erin.

Erin officials said that regional government and the Ministry of the Environment would rule on any such water contract.

**Land Trust:** Under the proposed plan, roughly 100 acres of the 178-acre site will be left wild. The undeveloped tract of fields and forest would be consigned in perpetuity to an agency such as the

Credit Conservation Authority or a land trust.

"We'd love to be that land trust," says Bob Barnett, head of Escarpment Biosphere Conservancy, which already has 37 nature reserves around the Niagara escarpment running from Niagara Falls to Tobermory and Manitoulin Island.

A nature reserve such as he proposes would ban hunting and motor vehicles while allowing minimal ecological footprint such as hiking trails and native tree planting. And, of course, it would outlaw development forever.

"We'd be a passive landowner. We don't do a lot of active management—we more or less let nature take care of things," said Mr. Barnett.

"We'd welcome such a participation as the Belfountain school kids," he added. "Education is part of our mission."

Were the 100 acres transferred to a land trust, it would pass without land transfer tax and would bring certain tax incentives to the developer, Barnett said.

**Belfountain Public School:** That Belfountain school participation that Mr. Barnett mentioned just might happen.

Students in grades three and six of the Belfountain Public School this year will learn through an ecological lens. And next year, it is hoped that the whole school will participate in the new program that applies an environmental tint to the curriculum.

"The children will spend a lot more time outdoors," says Barb Kane, a parent and member of the Outdoor Education Advisory Council (OEAC). "Instead of measuring a table leg for mathematics class, they'll measure tree circumferences or river flow rates."

The two chosen grades will spend one full class a week on environmental issues, she said. They'll do projects such as planting native grasses on bare schoolyard property and cultivating butterfly and grouse habitats.

Their teachers—Pam Gibson and Mary White—are to receive ongoing training from the Board's outdoor education experts. Funds for the pilot program are a blend of parent donations and Board of Education contributions.

A 100-acre nature reserve right next door to the school would be "just wonderful," says Ms. Kane.

"It would be fun to have some kind of a classroom out there—maybe a cabin—that would be some kind of destination for the kids," said Peter Kendall, another parent on the OEAC.

**The Donated Lot:** Under the terms of the development proposal, a single building lot is to be donated to the village of Belfountain.

That lot will likely be on Mississauga Road, immediately south of the village. Just what the village will do with the lot is open to question.

Some BCPO members have talked about using the lot as an overflow parking lot—an idea that others reject as serving only the businesses in the village and being used only a few days a year.

"It could be used as a new location for the community centre with parking," said Councillor Jim Wallace. "Or as parkland, but we already have Forrester's Park."

Others advise selling the lot and spending the funds on upgrading the community hall and other local projects.

One possibility that has been voiced would apply the money to help defray the costs of hooking up water and sewage systems in Belfountain homes that currently have polluted wells and inadequate septic systems—assuming abundant water becomes available from Erin or elsewhere.



Photo by Charles Peyton

## Back To Its Roots

Looks like our general store has returned to serving the community.

Two months ago Garth Turner was the Belfountain Village Store shopkeeper.

Then Bonnie Glenn 'bought' the business, only to have her deal fall apart.

Now it's new owner Lynn Moore who, along with son Austin and daughter Andree, is selling fresh coffee and muffins at 7 a.m. at the Belfountain store.

Yes, that same energetic Lynn Moore who in March 2005 opened *Crazees at 282 Restaurant* in Erin, who bought the Cataract Inn building and business earlier this summer with a closing set for the end of October, and who now has a lease on the Belfountain store with an option to buy the building in October, 2007.

Yes, that same smiling Lynn Moore you may have met five years ago as hostess/manager at The Belfountain Inn.

"I just see myself as a worker," says the fast-rising hospitality industry tycoon. "It's all about timing, hard work, and a very supportive staff."

Of course, Ms. Moore's shop-owning career could fizzle fast—Mr. Turner retains the right to sell the building at any time before Oct. 2007 if he can get a better price than Ms. Moore's offer. But Mr. Turner has already taken the property off the real estate listings where it was priced at \$1.05 million.

Ms. Moore's price for the store: "definitely under a million dollars," she says.



**Sept. 30 (Sat.)  
Salamander Festival  
10 a.m. to 3 p.m.**

The Salamander Festival still needs volunteers to help with the making of signs, decorating the village and other fun activities. Returning this year will be **Flatface & Friends** dog agility performance team, the **Allegro Children's Orchestra** and **Georgie Donias** and her band, all of whom were enthusiastically enjoyed last year. We will have a surprise singing and dance troupe this year as well as the traditional **Bake Sale** and vendors offering their wares. The Belfountain Village Church will be putting on their famous **Pancake Breakfast** and the BCPO will be sponsoring the **BBQ**.

We are looking for contributions for our **Silent Auction**. Please call Linda Moorcroft at (519) 927-9519.

Anyone keen to perform at the Festival or to be one of the vendors, please call Madelon (519) 927-9087.



## Adopt-A-Rubbish



If you've noticed the bottles and paper cups littering Belfountain area roads, the boss of Peel Region's Adopt-a-Road Sponsorship Program has an explanation: Rubbish on nearly 21 kilometres of roads adopted by local Re/Max real estate agent Ian Amos and his Aspera Terrent Farm business appears not to have been picked up.

"I have yet to hear from him," Sally Rook, technical analyst roads Region of Peel, told *The View* on Aug. 14.

Under the program, adopters must arrange with Ms. Rook to clean their areas at least twice a year. The Region credits adopters by erecting two signs on each adopted stretch. Adopters who prefer the government do their cleanup must pay \$300 per kilometre per year.

"We prefer one collection in the spring and one in the fall," said Ms. Rook. "But technically, he has until the snow flies."

She has some 15 adopters across the Peel Region, including "a short list of people who see it as free advertising," she said. "I don't want to play hardball, but..."

Interestingly, the credit to Mr. Amos has vanished recently from the signpost south of Belfountain on Mississauga Rd.

Mr. Amos did not return our call.

If you or your group would care to adopt a section of road, log on to [www.peelregion.ca](http://www.peelregion.ca) and go to public works and thence to adopt-a-road.

## Follow the Red Brick Road

Best walked on before Aug. 16, 2006.

Peel Region roads staff brought in heavy machinery on that date and mercifully scraped away the tattered carcass of the phony brick crosswalks at the corner of Bush and Main Sts.

The experiment with two scorched down strips is said to have cost taxpayers some \$9,000 and barely lasted one year.

"It only lasted one winter," said BCPO member David Jobe. "The snow plow just wrecked it."

Councillor Jim Wallace was unable to confirm the price of the pseudo-brick, which was to have provided a visible walkway at the corners.

"I believe it was a test product on the part of the Region," he said. "It failed the test. But everyone knew it wouldn't work because it was to have been inset in the tarmac, not just plastered on top of it."



Photo by Charles Peyton

*In case you hadn't noticed: There's nary a loud belchin' Harley cruising the Forks of Credit Rd. The road is to reopen just before Christmas.*

### The View from Belfountain...

comes to you from the Belfountain Community Planning Organization. It is published irregularly as news and information warrant and time allows. It is circulated to all residents of Belfountain and its environs.

#### Submission Deadlines:

To submit articles or information, email or drop of discs/hard copies to David Kendall, editor at 519-927-3204 / email [inkarri28@yahoo.ca](mailto:inkarri28@yahoo.ca), or co-editor Charles Peyton at 519-927-5055 / email at [cpeyton@rogers.com](mailto:cpeyton@rogers.com).

*Next deadline* to submit articles by December 20; publication around first part of January.

## Did you know that...?

*It was C.W. Mack who really put Belfountain on the map.*



We went to our inexhaustible Trimble well of heritage stories to come up with an answer to the question, "Who had contributed most to our hamlet over the years?"

Well, Bernice and John Trimble in their unassuming way could not talk about themselves or the late Roy and Eleanor. We all know that starting with Trimble's Garage in the 1920s these were the folks who had the greatest lasting impact on Belfountain. But without hesitation John and Bernice answered, "C.W. Mack." For us old-timers the Conservation Area is still known as Mack's Park. Mack, who made his fortune with the invention of the rubber stamp, created the Park with its lake, waterfall and suspension bridge in the 1920s. From the beginning Mack let the people of Belfountain use the Park, although decorum was rigidly observed. Women had to wear proper frocks and hats. Even the men had to wear hats when promenading and two piece "bathing costumes" when swimming.

John Trimble recalled that Mack's business affairs took him overseas so that within a few years people were coming from literally all over the world to enjoy the scenic beauty of Belfountain and the Forks of the Credit. So, long before the tourist busloads and long, long before the biking hordes, Belfountain was the destination of many thousands of eager visitors because of Mack's Park.

Mr. Mack was a kindly, but eccentric, philanthropist. For many years the little bridge over the Credit had a plaque that said MACKS BRIDGE. Mrs. Mack too kept active in the hamlet and contributed greatly to the Village Church over the years.

We hope to do a major article in the future about the extraordinary Trimbles.

JBD



## Belfountain Village Church

Some 60 kids attended the 9<sup>th</sup> annual Summer Adventures Camp featuring VeggieTown Values from 9 to noon every day last week to learn games, crafts, music and story-telling. The camp closed Sunday with a special celebration and barbecue lunch.

The '55 Plus Connection' is holding exciting monthly seminar/get-togethers and 12:30 p.m. luncheons every last Thursday of the month. Mark your calendar Sept. 28 to enjoy lunch at the church and then join a group visit to a bird sanctuary in Hillsburgh featuring more than 200 exotic birds.

For further details, call Carole Bellamy at 905-838-3365.

## Letter From...

### The President of the BCPO

We are having a busy summer thanks to our volunteers. Four bulletin boards have been installed near our mailboxes, built and erected by Tony Donatelli with much appreciated help from Darryl McNichol, Dave Mawle, friends from River Systems Stone Restoration and Ron Bellamy. Daryl has also offered to look after the intersection flowerbeds with our volunteers.

Thanks also to Laura Arsenault for the donation of the lovely flower barrels in front of the Community Hall.

We hope to see everyone at the Salamander Festival on September 30 (see details on front page). This is our major source of funds to continue our mandate to protect and enhance the uniqueness of our village. For example: *The View from Belfountain* comes out quarterly and is now a must-read and we contribute to various environmental projects within our community, the fish hatchery and the Elora/Cataract Trailway. Last year we were able to donate \$2,000 to the Belfountain Public School Playground Fund. Thanks to all.

Madelon Stevenson

If you have questions or concerns please call your BCPO representatives:

Madelon Stevenson (President) 927-9087, Wade Domet (Treasurer) 927-3303, James B. Douglas (Secretary) 927-5277, Charles Peyton (Vice President) 927-5055, David Jobe 927-3434, Grecia Mayers 927-3204, Linda Moorcroft 927-9519.

## Good Party, Bad Party

So there they were June 25, the boisterous and the beautiful of Caledon Mt. estates, toasting their first ever block-party on Woodland Ct., when two Caledon fire engines wailed into sight.

Fire below the cliff, said Andy McIntyre who had dialed the firefighters.

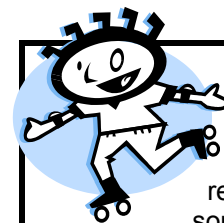
A Bruce Trail hiker had panted to his front door earlier in the day to report smoke rising from what appeared to be a school's-out party the previous evening.

*The View* delayed looking until the following day—not caring to tempt the steep declivity leading to the crime scene after having been caught up in the revelries of the block party.

By then, the party site on Woodland was spotless.

But the doused campfires in the lee of the cliff were two black splotches amid a glitter of shattered bottles, plastic containers, a hundred metal-based candles, wrappers, plastic bags and napkins abandoned by the merry-makers.

*The View* momentarily contemplated ringing Ian Amos, well-known friend of the environment and adopter of Belfountain-area byways, but on second thought opted to do the clean-up without assistance. Our tally: three crammed shopping bags and one bulging topsoil bag.



## Kids Corner

This issue we sent our roving reporter to get an answer from some of our children to a question of the day.

*If you had lots of money what would you do to make Belfountain a better place to live in?*

"If I had the money I would give it to someone who didn't. More flowers everywhere would be pretty."

*Nineve Burke, age 5 ½*

"Put more flowers in front of the church...maybe more in front of the store."

*Cameron Barber, age 8*



## Belfountain Library Hours Change

We hope you all had a great summer. Starting in September we will revert back to regular hours of 4:00 p.m. - 8:00 p.m. Tues. to Thurs. and Sat. 10:00 a.m. - 4:00 p.m.

